

# Biatain<sup>®</sup>

More than a foam

# Biatain®

## - superior absorption for faster healing

After 30 years in wound care, we at Coloplast believe that absorption is the key to better healing. Our Biatain® portfolio brings superior absorption to daily wound care needs, making Biatain the simple choice for faster healing.

### Exudate management

Choosing a dressing with superior absorption and exudate management capabilities can reduce leakage, skin maceration, risk of infection and help achieve an optimal moist wound-healing environment.<sup>1-5</sup> This is where Biatain excels.<sup>6,7</sup>

### Poor exudate management can lead to

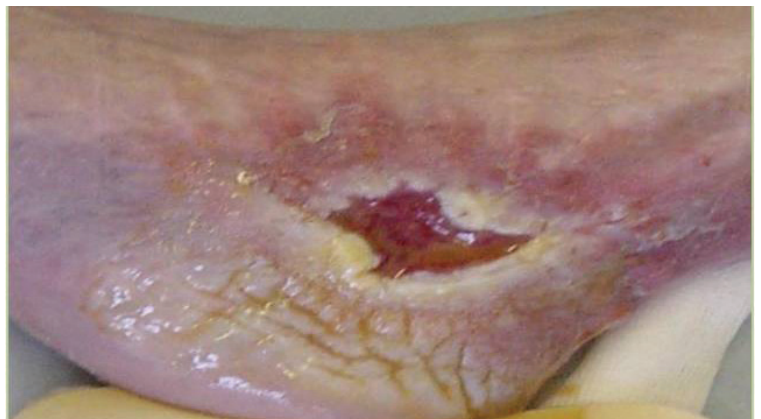
Maceration,

Excoriation,

Leakage,

And as a result, delayed healing.

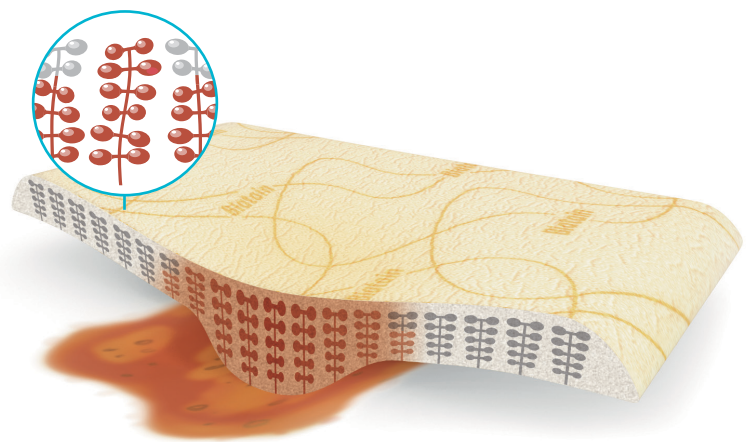
Whether a wound is low, medium or high exuding, control of exudate is imperative to wound healing.



Unlike conventional foam dressings, Biatain absorbs moisture from wound exudates into the structure of the dressing and not into the empty space within the structure.<sup>8</sup> As a result, the absorbed exudates will be locked in the dressing and will not flow out in case any sort of pressure is applied whether by patient's body weight or by compression bandaging / garment.

### Biatain's unique 3D polymer foam

- Conforms to the wound bed
- Absorbs exudate vertically
- Reduces peri-ulcer skin damage
- Locks in fluid even under pressure



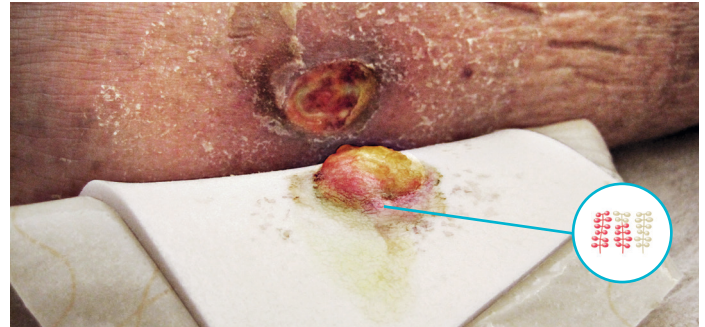
# Biatain®

## - Optimal moist wound healing environment

Creation and maintenance of an optimal moist wound healing environment is also of utmost importance as epithelialisation of a wound occurs more rapidly if a moist wound environment is maintained.<sup>9</sup>

### An optimal healing environment

When absorbing exudate, Biatain foam swells to conform with the wound for intimate wound contact, resulting in superior absorption and a moisture balance that improves the healing process.<sup>6-7</sup>



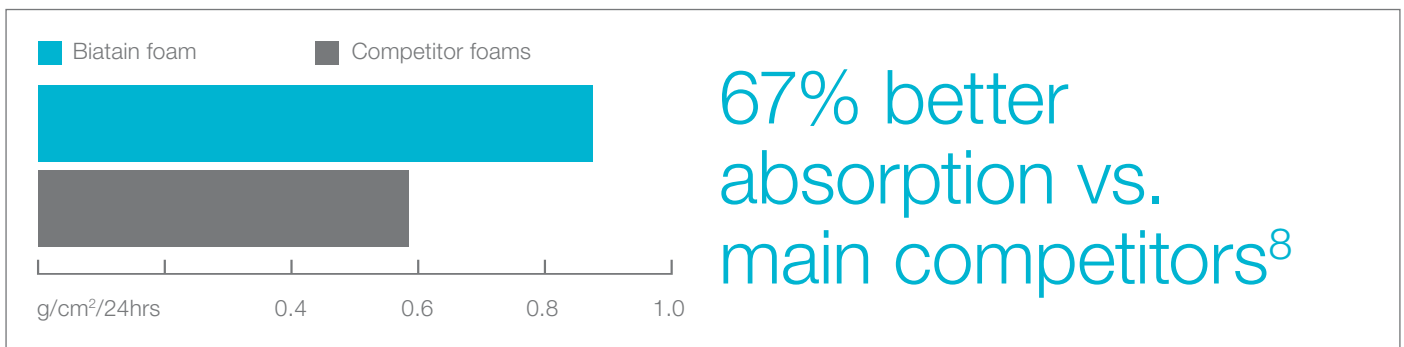
As Biatain swells it closes down on the dead space between the wound bed and the dressing. This benefit while providing an optimal moist wound healing environment by maintaining intimate contact to wound bed may also help to:

- Reduce the risk of exudates pooling and consequently peri-wound maceration
- Lower the risk of bacterial colonisation
- Prevent the wound from becoming hypoxic that can encourage anaerobic growth

### Where to use Biatain:

Biatain is indicated for a wide range of exuding wounds, including leg ulcers, pressure injuries, diabetic ulcers, superficial and partial thickness burns.

Biatain is particularly useful over joints such as elbows, knees, fingers and toes because of its ability to expand or contract without causing constriction.<sup>8</sup>



#### References:

1. Falanga. Classifications for wound bed preparation and stimulation of chronic wounds. Wound Repair and Regeneration 2000;8(5):347-52
2. Enoch & Harding. Wound Bed Preparation: The science behind the removal of barriers to healing. Wounds: A Compendium of Clinical Research and Practice 2003;15(7): 213-229
3. European Wound Management Association (EWMA). Position Document: Wound Bed Preparation in Practice. London: MEP Ltd, 2004.
4. World Union of Wound Healing Societies (WUWHS). Principles of best practice: Wound exudate and the role of dressings. A consensus document. London: MEP Ltd, 2007.
5. Andersen et al. Ostomy/Wound Management 2002;(48)8:34-41
6. Nielsen et al. In vitro test of three foam dressings with silicone adhesive: Fluid handling capacity with and without compression. Poster, EWMA 2011
7. Romanelli et al. Exudate management made easy. Wounds International 2010;1(2)
8. Sussman G; Tech Update: understanding foam dressings; wounds international Vol 1, issue 2
9. Alvarez O; Moist environment for healing: matching the dressing to the wound; ostomy / wound management 64-83, winter 1988

# Biatain® sizes and shapes

Superior absorption for  
non-infected wounds\*

## Biatain Non-Adhesive



Item no.	Size cm
13276	5x7
13277	10x10
13278	10x20
13279	15x15
13280	20x20

## Biatain Soft-Hold



Item no.	Size cm
13292	10x10
13293	10x20
13291	15x15

## Biatain Adhesive



Item no.	Size cm
13281	7.5x7.5
13282	12.5x12.5
13283	18x18
13284	23x23 Sacral
13285	19x20 Heel

## Biatain Alginate (SeaSorb)



Item no.	Size cm
29103705	5x5
29103710	10x10
29103715	15x15
291037402	40cm/2g

Superior absorption for  
infected wounds

## Biatain Ag Non-Adhesive



Item no.	Size cm
13294	5x7
11860	10x10
13295	15x15
13301	5x8 Cavity

## Biatain Ag Adhesive



Item no.	Size cm
13296	7.5x7.5
13297	12.5x12.5



New Biatain packaging (makes it easier on the shelf)



Available in New Zealand through USL Medical

For further information please contact your local key account manager or our Customer Service on 0800 658 814 or email [customerservice@uslmedical.co.nz](mailto:customerservice@uslmedical.co.nz)

\* Can be used for all types of exuding wounds.