

The strength to lock exudate

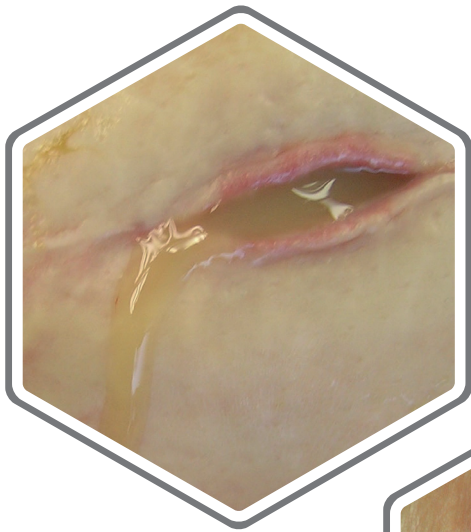
Biatain® Fiber with HexaLock Technology

Biatain® Fiber

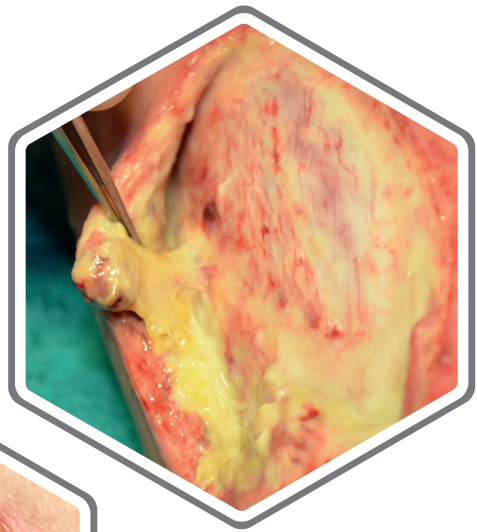
NEW



There is a risk of exudate pooling in all exuding wounds



Highly exuding wounds



Sloughy wounds



Cavity wounds, including undermining

To reduce the risk of exudate pooling in these challenging wounds you need a reinforced gelling fiber that:

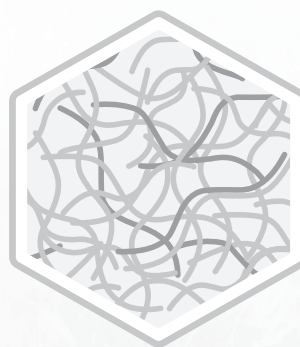
- Absorbs and retains high amounts of exudate even under compression
- Keeps in shape to minimise risk of gap creation and exudate pooling

Biatain Fiber with HexaLock Technology

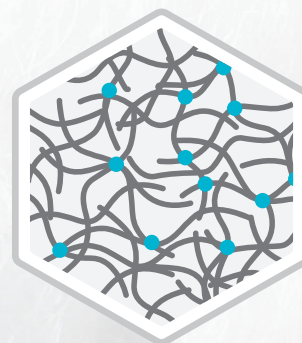
Developed to help you control exudate in challenging wounds

The unique HexaLock Technology integrates the gelling fibers in a reinforced hexagon net, giving Biatain Fiber strength to lock in exudate to reduce exudate pooling for optimal healing conditions.

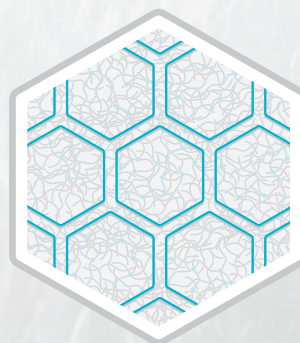
The dressing has high conformability that ensures close contact to the wound bed and reduces the risk of exudate pooling.



BiCo fibers are welded together with CMC gelling fibers for **extra strength**.



The fibers are **locked together** by thermobonding.



The fiber dressing is **reinforced** with a unique hexagon net by **ultrasonic embossment**.



Strength to lock exudate

Locks in exudate and bacteria

Effectively absorbs and retains exudate and bacteria, thereby reducing exudate pooling.



Minimises shrinkage

Minimising risk of gap creation and exudate pooling.



Cohesive gel

Easy one-piece removal with minimal risk of leaving residues in the wound.

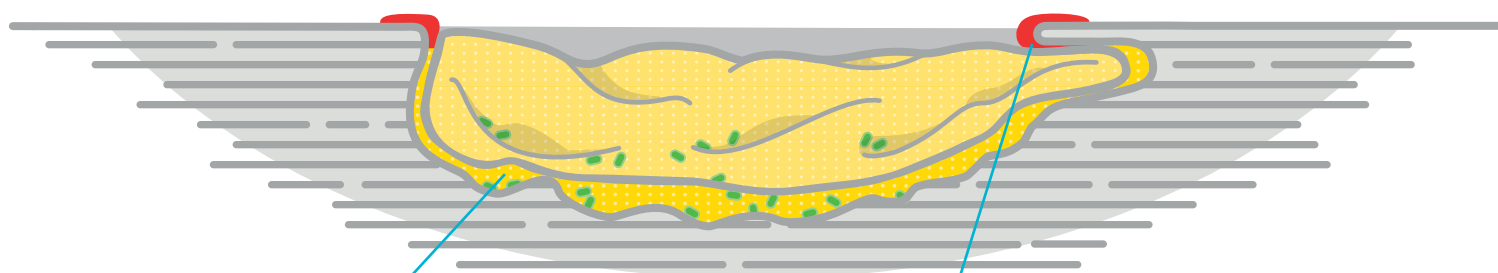


Biatain Fiber supports autolytic debridement and desloughing, which promotes the wound healing process.

Exudate pooling is a key challenge to wound healing

Wound exudate is an essential part of the healing pathway.¹

Chronic wounds often produce large amounts of exudate.¹



Infection

Gaps between the dressing and the wound bed create space for exudate pooling that promotes bacterial growth, leading to the risk of infection.^{1,2}

Maceration

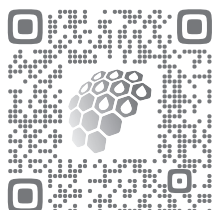
If exudate leaks onto the wound edges and the periwound skin it may cause maceration and delay wound healing.¹

The ideal solutions to reduce exudate pooling

To avoid exudate pooling, it is important to have a close contact between the wound bed and the gelling fiber as well as between the gelling fiber and the secondary dressing.

Use Biatain Silicone with 3DFit Technology as it conforms to fill the gap and reduces exudate pooling for optimal healing conditions.

Scan the QR code to watch the application video and visit www.coloplast.com.au to learn more



Available in New Zealand through USL Medical

For further information please contact your local key account manager or our Customer Service on:

Tel: 0800 658 814

Email: customerservice@uslmedical.co.nz

Biatain Fiber



reddot winner 2020
innovative product

USL Code	Size cm	Units Per Box
16800	5 x 5	10
16801	10 x 10	10
16802	15 x 15	10
16803	19 x 25	10
16804	2.5 x 46	10

Biatain Silicone



USL Code	Size cm	Foam size	Units Per Box
13286	7.5 x 7.5	4.5 x 4.5	10
13287	10 x 10	6.5 x 6.5	10
13288	12.5 x 12.5	8.5 x 8.5	10
13289	15 x 15	10 x 10	5
13290	17.5 x 17.5	13 x 13	5
14790	10 x 20	5.5 x 15.5	5
14791	10 x 30	5.5 x 25.5	5

Biatain Silicone Sacral



USL Code	Size cm	Foam size	Units Per Box
14792	15 x 19	10.9 x 14	5
14793	25 x 25	17 x 17.2	5

Biatain Silicone Multishape



USL Code	Size cm	Foam size	Units Per Box
14795	14 x 19.5	7.5 x 12.1	5

Biatain Silicone Heel



USL Code	Size cm	Foam size	Units Per Box
14794	18 x 18	14 x 13.2	5