



## The wound contact layer with SafetaC® technology (single sided)

- Minimizes pain and trauma at dressing changes<sup>1,2</sup>
- Can remain in place for up to 14 days<sup>3-7</sup> which allows cost-effective<sup>1,8</sup> and undisturbed wound healing

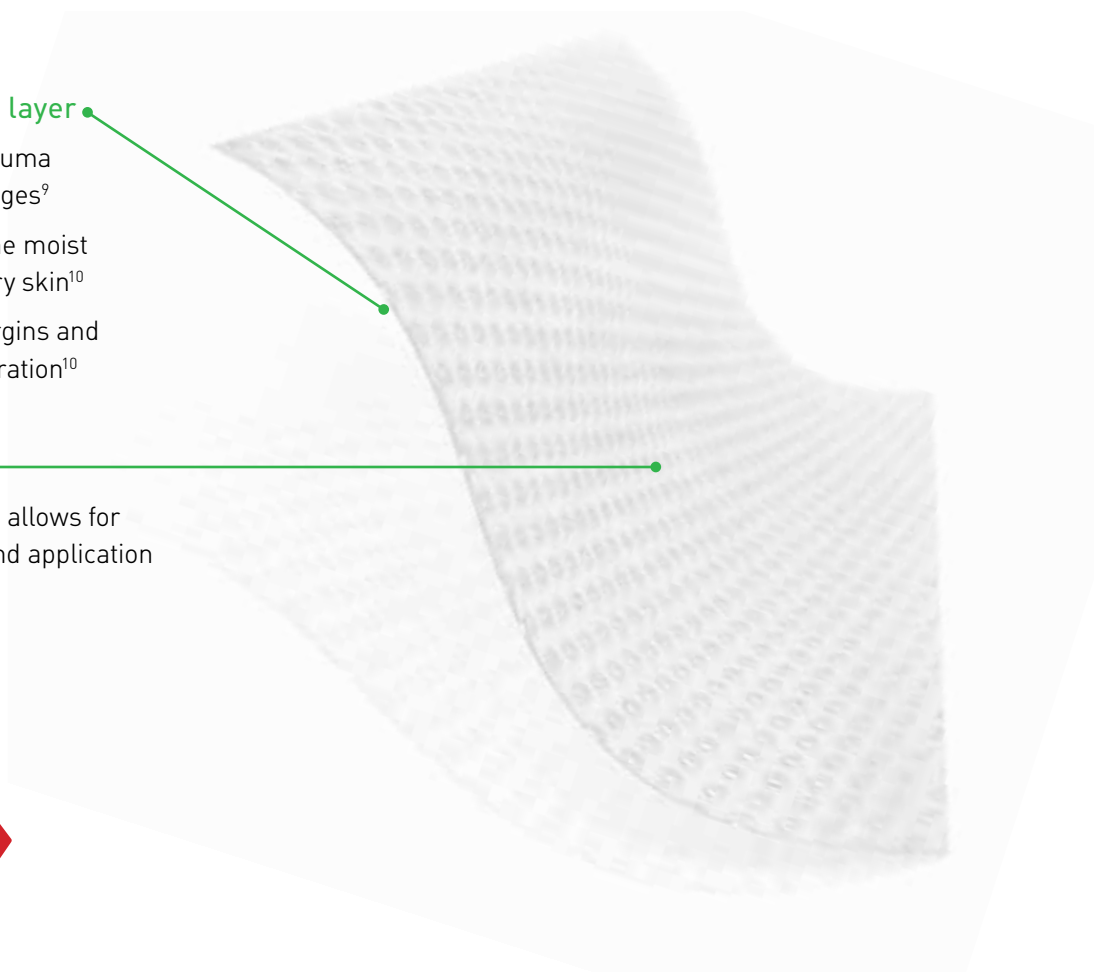


### SafetaC® technology layer

- Reduces pain and trauma during dressing changes<sup>9</sup>
- Does not adhere to the moist wound bed, only to dry skin<sup>10</sup>
- Seals the wound margins and reduces risk of maceration<sup>10</sup>

### Polyurethane net

- Open mesh structure allows for transfer of exudate and application of topical treatment
- High transparency



**NEW LARGE SHEET  
AND ROLL SIZES**

### SafetaC® technology. Less pain and less trauma.

SafetaC® technology is a patented adhesive technology that minimizes pain to patients and trauma to wounds. SafetaC® technology is available exclusively on Mölnlycke Health Care dressings, including Mepilex® wound care dressings, Mepitel®, Mepiform® and Mepitac®.

For more information visit [www.molnlycke.us](http://www.molnlycke.us)

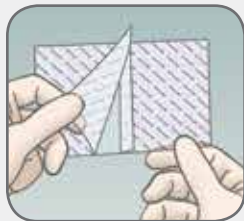


Skin stripping may occur with traditional adhesive

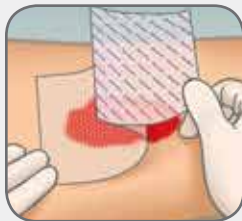


Minimal skin stripping with SafetaC® technology

## How to use Mepitel® One



Clean the wound area. Ensure the peri-wound skin is dry.  
Remove the top release film.



Apply Mepitel® One to the wound, allowing for at least 2 cm overlap of wounds edges. Larger wounds may require more overlap. Remove second release film during application



Apply outer absorbent dressing and a retention dressing if needed (such as Tubifast®, Tubigrip®, etc.)

## How Mepitel® One works

Mepitel® One may be left in place for up to 14 days<sup>3-7</sup>, depending on the condition of the wound, which reduces the necessity for frequent primary dressing changes. The porous structure of Mepitel® One allows exudate to pass into an outer absorbent dressing. The Safetac® layer prevents the outer dressing from sticking to the wound and ensures atraumatic dressing changes. The Safetac® layer also seals around the wound edges, preventing the exudate from leaking onto the surrounding skin, thus minimizing the risk of maceration.

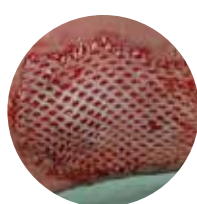
## Benefits of Mepitel® One

- Minimizes pain and trauma at dressing changes<sup>1,2</sup>
- Safetac® layer on wound contact side only (one sided) for easy handling and application
- May remain in place for up to 14 days<sup>3-7</sup> which allows cost effective<sup>1,8</sup> and undisturbed wound healing
- Enables less frequent dressing changes
- Minimizes the risk of maceration
- Leaves no residue and does not dry out
- Transparent for easy wound inspection during application and wear
- Conforms well to body contours, promoting patient comfort during wear
- Stays in place

**Wear time:** Up to 14 days.



Burns



Skin grafts



Skin tear

## Areas of use

Mepitel® One is designed for a wide range of wounds such as:

- Painful wounds
- Skin abrasions
- Partial thickness burns
- Blistering
- Partial & full thickness grafts
- Leg and foot ulcers
- Skin tears
- Surgical incisions
- Traumatic wounds
- Lacerations
- Radiated skin

It can also be used as protective layer on non-exuding wounds and on areas with fragile skin.

## Mepitel® One Ordering Information†

Product Code	Size	Pcs/box	Pcs/case	HCPCS
289100	2" x 3" (5 x 7.5 cm)	10	70	A6206
289300	3" x 4" (7.5 x 10 cm)	10	40	A6206
289500	4" x 7" (10 x 18 cm)	10	70	A6207
289700	6.8" x 10" (17 x 25 cm)	5	40	A6208
289750	10.8" x 20" (27.5 x 50 cm)	2	14	A6208
289850	3.75" x 59" (9.5 x 150 cm)	5	10	A6208

NEW  
SIZE  
NEW  
ROLL

† Packaged sterile in single packs

## Precautions

- The wound should be inspected for signs of infection according to clinical practice. Consult a healthcare professional for the appropriate medical treatment.
- If Mepitel® One is used on Epidermolysis Bullosa patients, employ extra surveillance at dressing changes. Adhesion level of Mepitel® One is somewhat higher than that of Mepitel®.
- Mepitel® One used on burns treated with meshed grafts: avoid placing unnecessary pressure upon the dressing.
- Mepitel® One used after facial resurfacing: avoid placing pressure upon the dressing lift and reposition the dressing at least every second day.
- When used on bleeding wounds or wounds with high viscosity exudate, Mepitel® One should be covered with a moist absorbent dressing pad.
- When Mepitel® One is used for the fixation of skin grafts, the dressing should not be changed before the fifth day post application.

## Warnings

When Mepitel® One is used on burns treated with meshed grafts or after facial resurfacing, imprints may occur if the product is not used properly.

**References:** 1. Gotschall CS, et al. Prospective, randomized study of the efficacy of Mepitel on children with partial-thickness scalds. *Journal of Burn Care & Rehabilitation* 1998;19(4):279-283. 2. Bugmann Ph, et al. A silicone-coated nylon dressing reduces healing time in burned paediatric patients in comparison with standard sulfadiazine treatment: a prospective randomized trial. *Burns* 1998;24:609-612. 3. Eagle M. Use of non-adherent silicone dressing Mepitel to meet client centered needs in chronic non-healing wounds. *Clinical Report Mölnlycke Health Care* (1998). 4. Taylor R. Use of a silicone net dressing in severe mycosis fungoides. *JoWC*, Vol 8, No 9 (1999), p.429-430. 5. Young T. Fungating wounds: their diagnosis and management. *Community nurse*, 5, No 10 (1999), p. 53-54. 6. Marconi R, Laverda F, Trevisan G. Poster Presentation European Wound Management Association, Helsinki, Finland, 2009. 7. Barrazol R, Fracalenta E, Schiavon M. Poster Presentation European Wound Management Association, Helsinki, Finland, 2009. 8. Rippon M, Davies P, White R, Bosanquet N. Cost implications of using an atraumatic dressing in the treatment of acute wounds. *JoWC*, vol 17, No 5 (2008), p. 224-7. 9. Dykes PJ et al. Effects of adhesive dressings on the stratum corneum of the skin. *J Wound Care* 2001; 10(2):7-10. 10. Dykes PJ. The effect of adhesive dressing edges on cutaneous irritancy and skin barrier function. *J Wound Care* 2007, 16(3):97-100.



**We're here to help you, when you need us. Call your Mölnlycke® Health Care Representative or Regional Clinical Specialist.**  
1-800-843-8497 | [www.molnlycke.us](http://www.molnlycke.us) | 5550 Peachtree Parkway, Suite 500, Norcross, GA 30092