



# SHOW YOUR ABILITY

2019



## NEW PRODUCTS

COME AND VISIT US AT OUR STAND TO FIND OUT MORE INFORMATION.





# CONTENTS

KIRTON POSTURE SUPPORT.....	3
DHS & ACCUMAX MATTRESSES .....	4
DHS DYNA FORM MATTRESSES .....	5
DHS PRESSURE RELIEVING CUSHIONS ..	6-7
ASPIRE A150 HOIST.....	8
HILL-ROM VEST & GOLVO 9000.....	9
LIKO VIKING HOISTS.....	10
LIKO PAEDIATRIC SLINGS .....	11
LIKO ADULT SLINGS.....	12
LIKO SINGLE USE SLINGS.....	13
LIKO OVERHEAD LIFTING SOLUTIONS .....	14
LIKO BARIATRIC LIFTING.....	15
LIKO GANTRY HOISTS.....	16
LIKO REPOSHEET & MULTISTRAP.....	17
DELLOCH HIP PROTECTORS.....	18
PATIENT TRANSFERS & SLIDE SHEETS.....	19
USL EQUIPMENT TEAM .....	20



## DUO MAJOR MANUAL

The Duo is the most versatile seating system designed for those who are unable to maintain their posture and need high levels of pressure relief.

The adjustable and key features of the Duo ensure the core principles of seating are met for each individual.

### Accessories:

- Lateral supports
- Leg-laterals
- Pommel
- Leg rest bracket to achieve a 25° negative angle
- Flat seat board
- Foot sandals
- Ankle huggers
- Lap-belts and pelvic positioners
- Universal mobile tray
- Weight limit: 160kg



## FLORIEN II

A dynamic and highly mobile seating system, the Florien II enables greater independence by promoting correct posture and facilitating a supportive, comfortable seated position.

The removable arm is a fantastic feature of this chair, making it suitable for those who are hoisted or able to side transfer.

### Accessories:

- Height adjustable flip up footrest
- Adjustable lateral supports
- Adjustable headrest
- Lap-belt
- Pelvic positioners
- Universal tray
- Flat seat board
- Weight limit: 180kg



# DYNA-FORM™ & ACCUMAX



## AVAILABLE IN:

- SINGLE
- KING SINGLE
- DOUBLE
- QUEEN
- BARIATRIC KING SINGLE

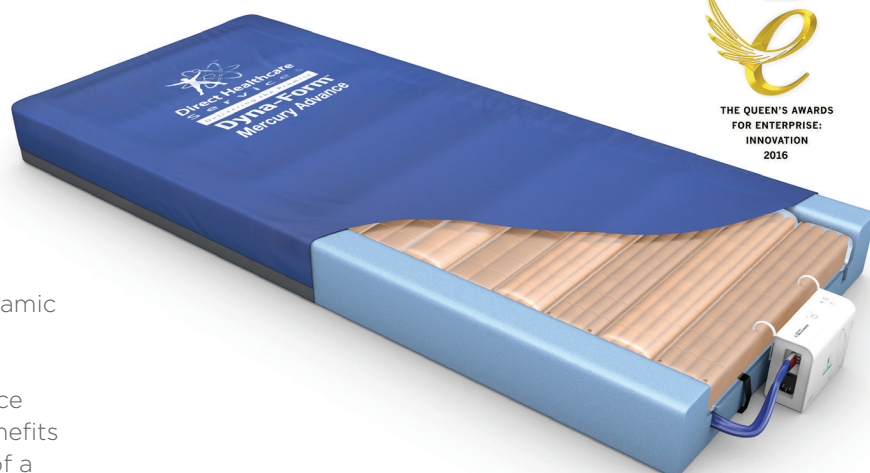
## MERCURY ADVANCE - “WINNER OF THE 2016 QUEENS AWARD FOR INNOVATION”

The Dyna-Form™ Mercury Advance is a dynamic mattress replacement system combined with the benefits of modern foam technology. It is specifically designed for patients considered to be at “High Risk” of pressure ulcer development.

Offering high levels of patient comfort, this unique system has the facility to “step up” to that of a dynamic mattress when clinically these features make it particularly beneficial for use within the patient’s home or palliative care environment and help reduce logistic and decontamination costs. The clinical benefits of a single system are equally applicable to those of a modern hospital setting.

A higher maximum weight capacity (up to 40stone/254kg), allows the product to meet the modern challenges of those heavier clients. All component parts are interchangeable and replaceable, maximising product life and reducing environmental impact.

The outer cover comprises a high frequency welded, multi stretch and vapour permeable fabric, satisfying the strictest infection control policies. Similarly, the mattress’ function can be downgraded as the patient’s condition improves.



“Hybrid Step Up, Step Down”

**HIGH RISK**

**VERY HIGH RISK**

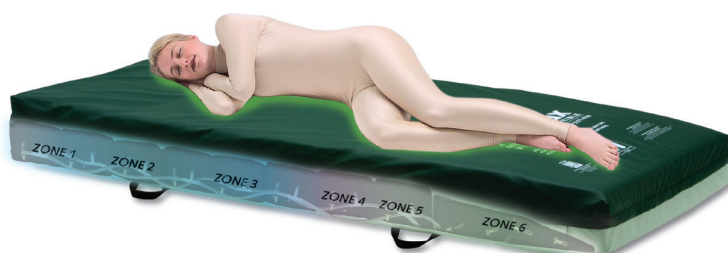


## ACCUMAX

The top of the line AccuMax™ Quantum™ Convertible is a non-powered pressure relief mattress that can be converted into a powered pressure relief mattress.

Some special features include a hand-crafted co-polymer and fibre topper, designed therapeutic pressure zones, plus a gentle heel slope.

These features all provide unsurpassed patient benefits and comfort. The Convertible also includes our exclusive Airport™ connection system as standard equipment to allow quick and easy conversion to a powered system with gentle, alternating pressure capability - as easy as 1, 2, 3!



**VERY HIGH RISK**





**HIGH RISK**

## STATIC AIR HZ

Dyna-Form™ Static Air HZ, a new generation of static support surface, developed in conjunction with the Welsh Wound Innovation Center.

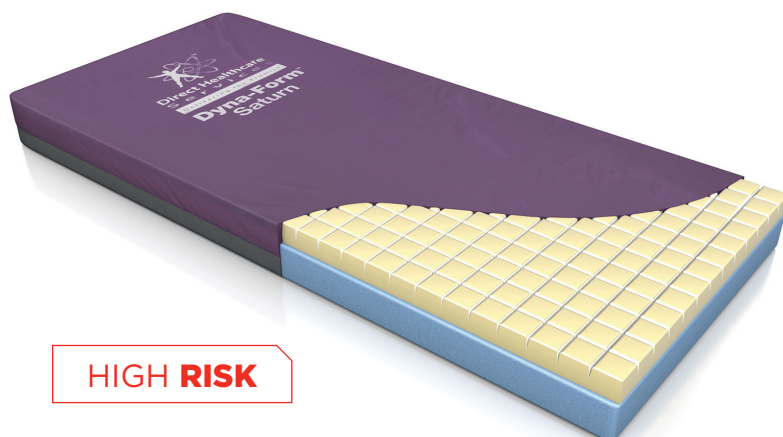
Dyna-Form™ Static Air HZ is a mattress replacement system that combines the benefits of effective air displacement technology with the best of modern foams, for a new standard of innovative pressure ulcer prevention management.

It's new and unique 'air only' intelligent heel zone and specially designed U-Core effectively offloads pressure on the particularly vulnerable heel area.

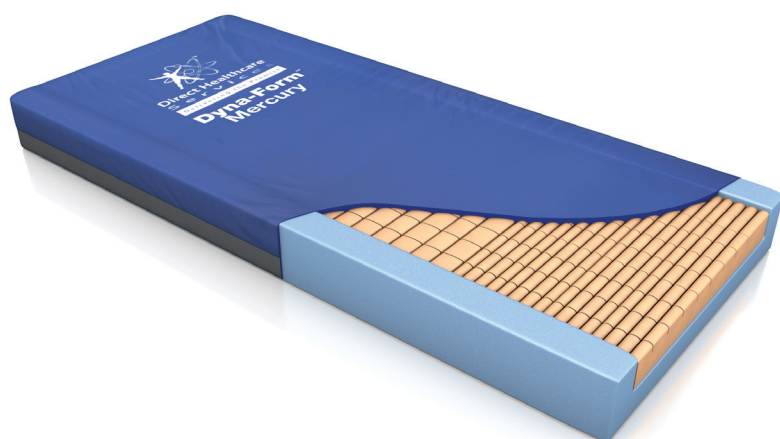
## SATURN

The Dyna-Form™ Saturn mattress is designed for users considered to be that of 'High Risk' of pressure ulcer development and for patients requiring complete comfort, whilst maintaining the highest pressure care support from a static mattress.

By using a blend of temperature sensitive, visco elastic foam at patient interface with the finest quality CME foam, the Dyna-Form™ Saturn provides excellent pressure re-distribution properties, but with patient comfort foremost considered within its design.



**HIGH RISK**



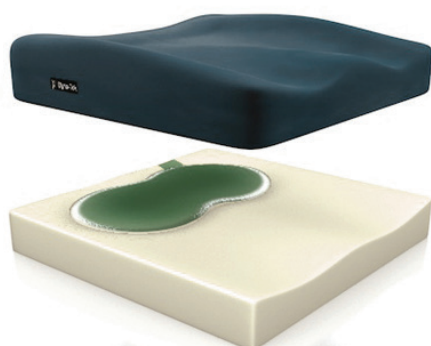
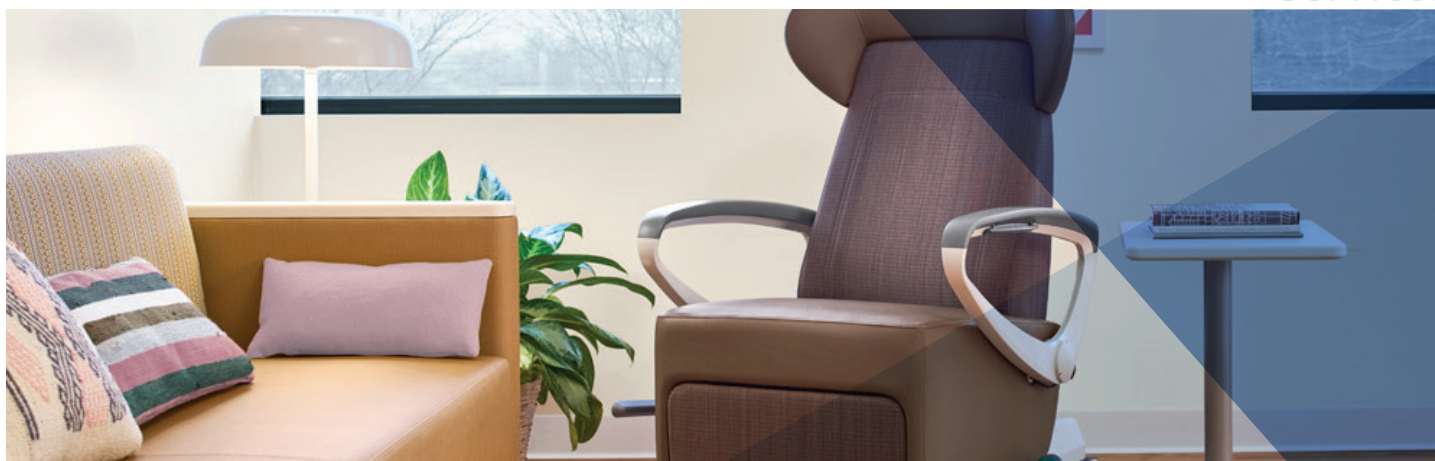
**HIGH RISK**

## STATIC MERCURY

The Dyna-Form™ Mercury mattress is specifically designed for users considered to be at "High Risk" of pressure ulcer development. Comprising of a specialist "castellated cut" and blends of the finest quality Combustion Modified High Resilient foam (CMHR) this product provides not only the best pressure re-distribution properties, but great patient comfort & product longevity. Side Wall construction enables primary stability for patient transfer purposes. Complete with a durable, multi-stretch, vapour permeable cover and a toughened polyurethane base, the Mercury mattress provides an important contribution towards the infection control and tissue viability standards of a modern hospital, nursing or homecare environment.



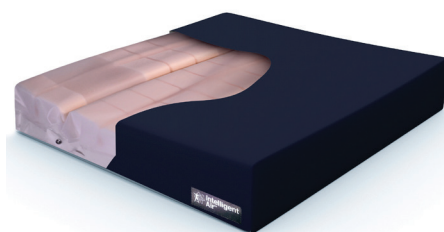
# PRESSURE RELIEVING CUSHIONS



## DYNA-TEK™ GEL CUSHION

The Dyna-Tek™ Gel Cushion, designed using the latest polyurethane gel. By incorporating the most advanced raw materials during the manufacturing process, enhanced postural management and greater pressure re-distribution is achieved.

**VERY HIGH RISK**



## DYNA-TEK™ INTELLIGENT AIR

The Dyna-Tek™ Intelligent Air Cushion sets a brand new standard in innovative wheelchair seating, delivering superior 'bespoke' pressure redistribution without the need for any set-up or re-pumping air lost over time.

**VERY HIGH RISK**



## MERCURY ADVANCE CUSHION

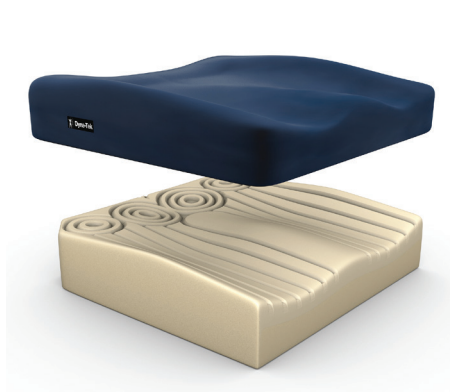
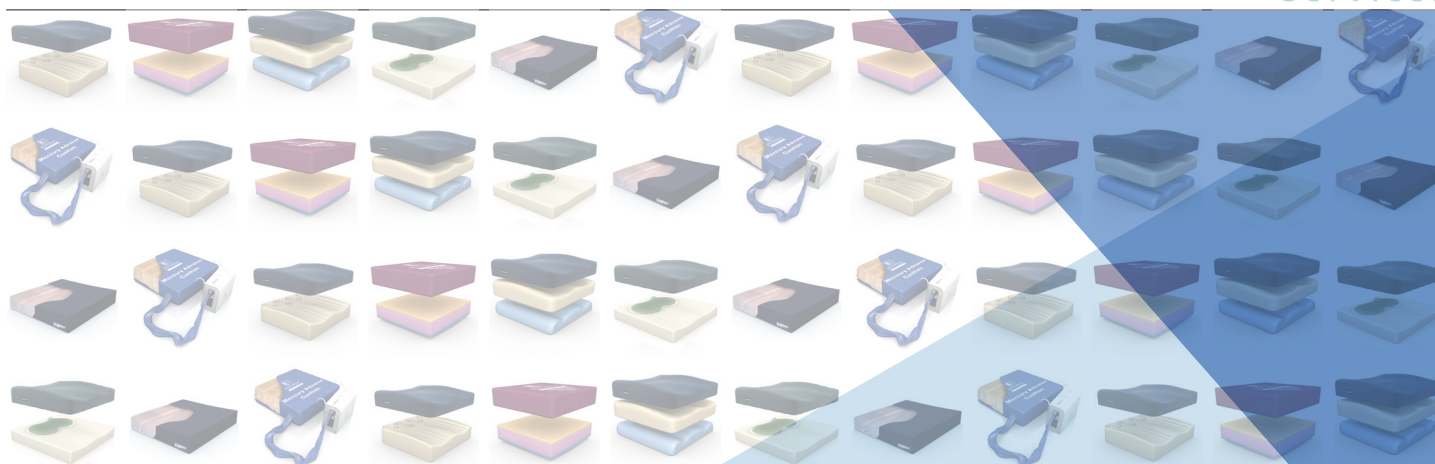
The Dyna-Form® Mercury Advance Alternating Cushion is a dynamic replacement seating system, combined with the benefits of modern foam technology. It is specifically designed for patients considered to be at 'Very High Risk' of pressure ulcer development. Offering high levels of patient comfort, this unique system has the facility to "step up" to that of a dynamic cushion when clinically required. Similarly, the cushion function can be 'stepped down' as the patient's condition improves. A higher maximum weight capacity, up to 24 stone / 152kg, allows the product to meet the challenges of heavier patients.

**HIGH RISK**

**VERY HIGH RISK**



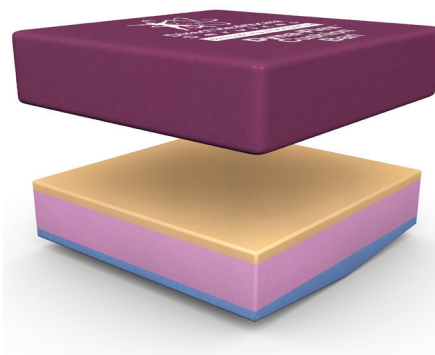
# PRESSURE RELIEVING CUSHIONS



## DYNA-TEK™ OWL CUSHION

The Dyna-Tek™ Owl Cushion is a uniquely designed postural management product, providing exceptional pressure re-distribution via it's "Owl contoured design", specifically made for users considered to be at "High Risk" of pressure ulcer development.

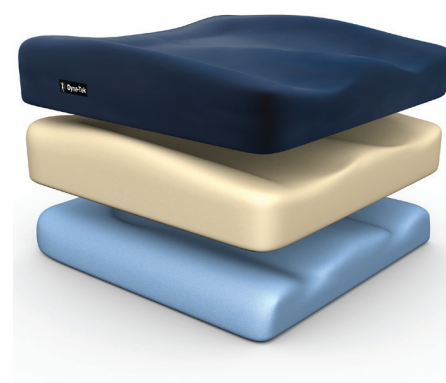
**HIGH RISK**



## DYNA™ FLEX CUSHION

The Dyna™ Flex Cushion incorporates the most exclusive combination of visco elastic and CME foam technology, providing outstanding pressure re-distribution and great patient comfort. Suitable for patients considered to be at "High Risk".

**HIGH RISK**



## DYNA-TEK™ POSTURE VISCO CUSHION

The Dyna-Tek™ Posture Visco Cushion is designed to create better postural management, along with greater pressure re-distribution. Made for users considered to be at "High Risk" of pressure ulcer development.

**HIGH RISK**





## NEW ARRIVAL!

### ASPIRE A150 ALUMINIUM FOLDING HOIST



The Aspire 150F is a lightweight and portable folding patient lifter designed for home and community environments.

#### Features

- **Folds for Transport and Storage:** Folds quickly and conveniently for storage or transport in the boot of the car
- **Ergonomic Handset:** The latest slimline technology from Linak fits neatly in the hand with an intuitive control panel. Battery and service indicator lights assist with service scheduling
- **Off Set Leg Design:** Provides additional accessibility around chairs and furniture in the home
- **Leg Function:** Simple foot operation to open or close legs for lifting stability or accessibility
- **Quick Release Yoke Attachment:** One touch release and attach mechanism, designed for the busy caregiver. Padded yoke for added patient safety
- **Build Quality:** Strong powder coated aluminium frame with industry leading Linak electronics and warranty provision – 5 year warranty on Frame
- **Safety:** Critical features include emergency stop button, emergency lowering and antientrapment technology, with both patient and caregiver safety at heart
- **Intelligent Diagnostics:** State of the art Linak Jumbo Care control system. Tracks usage and service requirements for safety and compliance
- **Quality Locking Castors:** 2 x 100mm rear locking castors for safety and manoeuvrability
- **Item Weight:** 32.9 kg
- **Tested and compliant to AS/NZS ISO 10535:2011** (the Au/NZ standard for hoists)



# HILL-ROM VEST & GOLVO 9000

## HILL-ROM 'THE VEST'

Effective in a variety of diseases and conditions.

**The vest has proven to be especially suitable for people with the following issues:**

- Lack of success with current airway clearance techniques
- Lack of strength or ability to perform active treatment
- Poor compliance with other airway clearance methods
- Where constant fatigue is a major problem
- Reliance on others to assist with mucus clearance

**Diseases and conditions The Vest Airway Clearance System has been prescribed for include:**

- Atelectasis, Pulmonary Infiltrates
- Acute Lung Injury (ALI) or Pneumonia
- Acute Respiratory Failure (ARF)
- Aspiration Lung Injury
- Pulmonary Insufficiency following Trauma
- Mechanical Ventilation or Surgery
- Acute Respiratory Distress Syndrome (ARDS)
- Obesity
- Cardiac Failure
- Cerebral Palsy
- Motor Neuron Disease
- Quadriplegia and/or Quadripareisis



- Muscular Dystrophies and other myopathies
- Dyspnea or other respiratory abnormalities
- Emphysema
- Asthma
- Chronic Bronchitis
- Bronchiectasis
- Cystic Fibrosis
- Chronic Obstructive Pulmonary Disease (COPD)

## GOLVO 9000

The Golvo 9000 lift offers the functional advantages of an overhead lift with the flexibility of a mobile lift. In combination with the extensive range of Liko accessories, Golvo is ideal for common lifting situations across a variety of care environments.

### Features:

- Vertical lifting motion with flexible lift strap is ideal for horizontal lifting, ambulation and lifting from the floor
- Parallel base-width adjustment contributes to easier lifting of patients or residents to/ from chairs, beds and the floor
- LowBase version allows for even greater clearance under low beds or stretchers versus the standard model
- Armrests help to support patients during ambulation, as well as making it easier for caregivers to manoeuvre the lift
- User display highlights device usage, including lift count, service requires indicator and overloads
- Optional quick-release hook system means caregivers can easily and rapidly change a sling bar or install a scale
- Ergonomic hand control for lift operation displays both battery usage and overload indicators
- An extensive assortment of accessories is available including slings, sling bars and scales.
- Two lifting speeds accommodate a variety of different lifting solutions
- Vertical lifting for ease of manoeuvre and in and out of cars



## VIKING

### FOR THE MOST DEMANDING LIFTS

Aluminium was the natural choice of material for Viking, not only for aesthetic reasons, but mainly because it makes your lift easier to manoeuvre. Aluminium also has a number of environmental advantages. Aluminium can be reused again and again, and recycling requires relatively little energy.



### VIKING - S

Small but strong. A small, easily manoeuvred mobile lift that performs superbly in relation to its diminutive size and low overall weight. Perfect in settings where space is limited.

- SWL: 160kg
- Weight: 25kg
- Lifting Height: 175cm



### VIKING - M

The all-round lift. After 25 years of market-leading product development, we know how to design the optimal mobile lift. Viking M has most of the best features and is ideal for the most common lifting situations.

- SWL: 205kg
- Weight: 34kg
- Lifting Height: 179cm



### VIKING - XL

For the most demanding lift. Lifting heavy patients entails great responsibility. Although Viking XL has been specially developed for very heavy patients, it is also suitable for average-sized people. Despite its size, Viking XL weighs only 43kg and is very easy to handle.

- SWL: 300kg
- Weight: 42kg
- Lifting Height: 187cm





## **TEDDYSLING ORIGINAL™ LIKO™ ORIGINAL SLING™, MOD. 26**

This sling is suitable for lifting to/from a seated/semi-reclining position or from the floor, if the child does not need special support for the head. Supports the entire back up to the shoulders.

- Belt with SafetyBuckle

**SIZES:** XS, S

**FABRICS:** Teddy-patterned knitted polyester (children), polyester (S only), net polyester, plastic-coated net (S only)



## **TEDDYVEST FOR STANDINGSHELL™ LIKO™ VEST FOR STANDINGSHELL™ MOD. 67**

We have developed the Vest for StandingShell for the difficult lifting of a child in a standing shell from the floor to a standing position. The lift takes the entire weight, and the child is lifted securely, with comfortable support for the whole body and the head.

- Head support and padded leg harness included

**SIZES:** XXS, XS, S

## **TEDDY HYGIENE VEST/LIKO™ HYGIENE VEST™**

We developed these slings for transfers to and from the toilet, but they can also be used for other lifting situations where an upright and steady sitting position is desired. The vest lifts around the upper body, which prevents any tendencies for the child to collapse. Children with spasticity problems often sit well in Mod. 55.

- Reinforced leg supports
- Model 55 has a head support

**MOD. 50: SIZES:** XXS, XS **FABRICS:** Teddy-patterned knitted polyester (children), polyester (XS only)

**MOD. 55: SIZES:** XXS, XS **FABRICS:** Teddy-patterned knitted polyester (children), polyester





## LIKO™ SOFT ORIGINAL HIGHBACK SLING™, MOD. 26

- Suits most patients
- Best choice for transfers from horizontal (lying) position
- Optimised fit and comfort
- Provides extra comfortable support for the head
- Comfortable reclined sitting posture



## LIKO™ HYGIENE VEST™ MOD. 50, 55

### MOD. 50:

- Suitable for patients with high/low tone
- Facilitates dressing/undressing during hygiene transfers
- Supports and lifts around the upper body
- High security for hygiene transfers
- Upright sitting posture

### MOD. 55:

- Excellent for patients with spasticity
- Facilitates dressing/undressing during hygiene transfers
- Gives good support for back and head
- High security for hygiene transfers
- Supports and lifts around the upper body

SIZES: XXS, XS, S, M, L, XL, XXL, XXXL \*FABRICS: Polyester, teddy-patterned knitted polyester (children)



## LIKO™ HYGIENE SLING™ MOD. 45, 46

Hygiene Sling™ Mod. 45 is equipped with a SafetyBelt™ which lifts around the upper body for extra stability. Besides the SafetyBelt™, Mod. 46 is also equipped with an extra high back support.

- Equipped with SafetyBelt™, suitable for patients with poor torso stability
- Enables dressing/undressing during hygiene transfers
- Can be used with one of the patient's arms on the inside
- Mod. 46 is equipped with back support which provides extra support, safety and comfort

SIZES: XS, S, M, L, XL \*

FABRICS: Polyester, teddy-patterned knitted polyester (children)



## LIKO™ AMPUTEE SLING

Liko Amputee Sling is a safe, easy-to-use sling that has been specially designed as an aid to lifting patients with high double-sided leg amputations. We also recommend the Amputee Sling for patients who are not amputees, but who tend to slide out of similar types of slings. Amputee Sling may be appropriate for other patients, such as single-sided amputees.



## LIKO™ SOLO SLING (SINGLE PATIENT USE)

- Disposable one use
- Products for short-term use

The spread of multi-resistant bacteria (MRB) within healthcare, along with the increased demand for products for short-term use, has led to the development of Solo™ – a range of disposable lifting accessories.

What is unique about most of the Solo™ products, compared to our ordinary lifting accessories, is that they are made from a very strong non-woven material. Solo RepoSheet™ is the exception, as this product is made in a cotton/polyester fabric.

Solo™ products are not intended to be washed but are to be disposed of once they have become soiled or when the patient no longer needs them. In other words, they are designed for short-term use by one particular patient.

Apart from being an effective solution for preventing the spread of infection, the lifting accessories also have economical and practical advantages: laundering is eliminated and they are always immediately available on the ward.



## OTHER SINGLE PATIENT USE PRODUCTS

### Liko™ Solo RepoSheet™

Solo RepoSheet™ is used to move up patients who have slid down in the bed or to turn bed-ridden patients.

### Liko™ Solo Octo

**LiftSheet™** Solo Octo LiftSheet™ is intended for horizontal lifting with Liko™ OctoStretch™.

### Liko™ Solo LiftSheet

**1800™** Solo LiftSheet 1800™ is intended for horizontal lifting with the LikoStretch Mod. 600 IC™.

### Liko™ Solo LiftSheet

**1900™** The Solo LiftSheet 1900™ is intended for horizontal lifting with LikoStretch 1900™.

### Liko™ Solo MultiStrap™

**Solo MultiStraps™** are used to lift and hold parts of the patient's body, in order to facilitate examination, care and treatment.

### Liko™ Solo SupportVest™

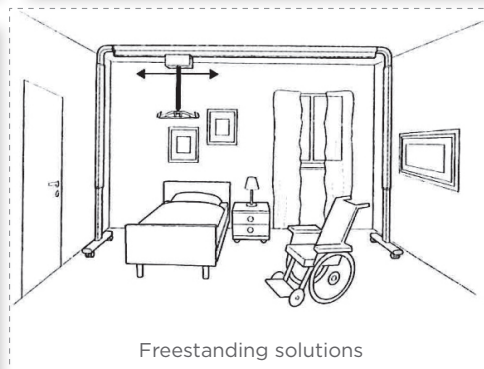
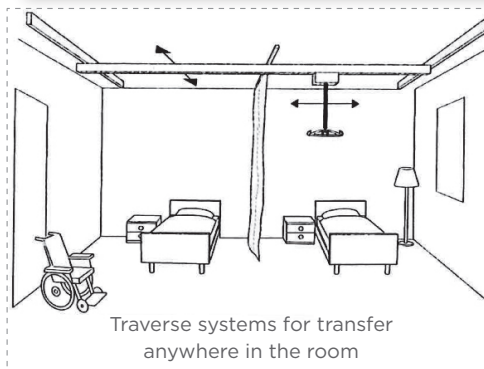
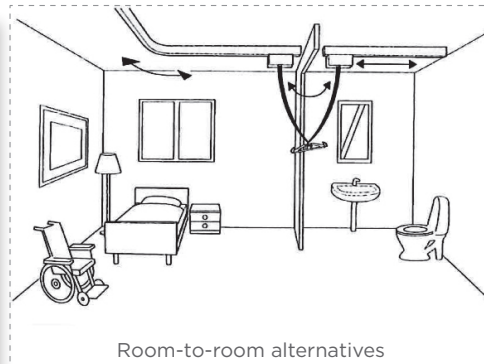
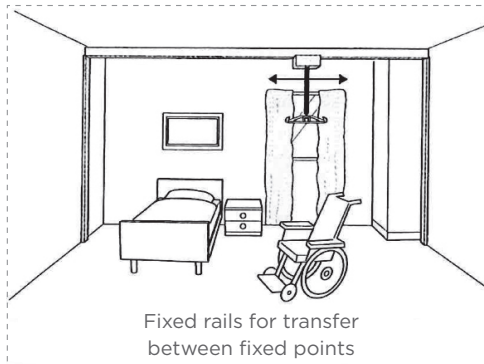
Solo SupportVest™ is used with the Liko™ Sabina™ sit-to-stand lift.

### Liko™ Solo Cover for Liko™ Ultra LiftPants™

Solo Cover is a disposable accessory for Ultra LiftPants™ for Bariatric gait training.

FURTHER  
CLINICAL  
INFORMATION  
AVAILABLE

# OVERHEAD LIFTING SOLUTIONS



## OVERHEAD LIFTING SYSTEMS

Always there when you need them, without taking up valuable space. With an overhead lift system, you can lift and transfer patients with minimal effort and maximum safety, regardless of how the room is furnished. An overhead lift is safe and easy to use for both the patient and the caregiver.

Liko's overhead lift systems cover a comprehensive range of needs and consist of many different components to meet a broad diversity of installation requirements. These lift systems are appropriate in all care environments and meet the highest demands for function, safety and availability. Our staff will help you to find the right solution for your particular situation.





# BARIATRIC LIFTING


**NEW**

## LIKOGUARD™ OVERHEAD LIFT

The LikoGuard™ series, the newest overhead lift system, will offer a selection of industry-leading features including:

- A redesigned sling bar (shown in image), built to enhance patient safety, with a patented design that is unique to the market
- Lightweight, environmental friendly lithium-ion battery technology withstands deep discharge, and is designed to bring reliability in function and durability
- An upgraded hand control, offering access to service data, overload indication, and battery status. An optional display version enabling monitoring of lift usage over the operational history either from the past seven days or of the total completed lifts since the day the device was first in use.
- The patented, manual emergency stop and emergency lowering mechanism is easy to reach, engage and operate during a time when it's needed the most. No work tools (i.e. ladder or Allen wrench) or force needed to lower the patient

In addition, the LikoGuard™ L and XL lifts have already undergone extensive testing for both durability and reliability, including:

- Lift cycle tested according to Real World Usage Profile
- Extensive safety margin testing on both critical and load-bearing components

### Two options for motor lifting capacity:

- L is 272kg SWL
- XL is 363kg SWL



# ULTRATWIN GANTRY HOIST OPTIONS

## ULTRATWIN

The heavy duty overhead system for the heaviest patients. With a lifting capacity of up to 460kg (1,014lbs), UltraTwin is designed for the heaviest lifting situations.

Its two interacting lift motors let the caregiver both lift and position the patient to different sitting postures during the lift.

- Maximum load: 400-460kg (880-1,014lbs)
- Lift motors: 2 Likorall or Multirall



## FREESTAND

The Freestand is a versatile system that is easily assembled by two people and is appropriate for most environments. Once assembled, the Freestand can easily be moved for use in a different area. Since the Freestand is completely freestanding, there are no special requirements for the ceiling or walls.

- Lifting capacity: 250Kg

## FREESPAN

Straight Rail or Traverse - the choice is yours. FreeSpan is the flexible alternative for most stationary-lift situations. The lift system is freestanding, and since it is not affixed to the walls or the ceiling, there are no special strength requirements for those structures.

FreeSpan features:

- Straight Rail or Traverse (H-system)
- Several different rail-lengths
- Easily adjustable height and width
- Made of light-weight, extruded aluminium. The right choice of material from all viewpoints: environmental, quality, design and corrosion
- Max load: 200kg (440lbs)







## REPOSHEET™

Everybody knows that it is almost impossible to lie still in bed — not even when we sleep do we lie still. Even severely disabled persons sometimes end up wrongly positioned in the bed. Consequently, lifting and repositioning patients is one of the most common operations around a bed.

Research\* also shows that many work-related injuries occur here. When a patient is to be moved higher up in the bed or turned, Liko™ RepoSheet™ is an excellent aid. The Liko™ RepoSheet™ is placed under the patient and can be used both in combination with and instead of an ordinary sheet during the entire care period. (Liko™ Solo™ RepoSheet™ is always used together with an ordinary sheet. With Liko™ RepoSheet™ and an overhead lift, it becomes possible for just one caregiver to reposition a patient in bed.



## MULTISTRAP™

MultiStrap™ is a lifting accessory from Liko™ which completes the other lifting and repositioning aids in Liko's wide range. MultiStrap™ has been developed to meet a variety of needs in care and can be used to hold arms, legs and other parts of the body, for example, during treatment or washing. Together with a patient lift, MultiStrap™ facilitates many heavy lifting tasks such as wound care (e.g. burn injuries), hygiene procedures, treatment (e.g. catheterizing or dressing wounds), examinations, placement of bedpans and dressing/undressing.

The MultiStraps can also be used to turn a patient to the side. MultiStrap™ can be used individually or in pairs. For turning in bed, we recommend using it in pairs with one of the wider models.

### Important Features

- Facilitates lifting/holding e.g. arms and legs during treatment/washing
- Three washable MultiStraps in different sizes
- Also available are MultiStraps in disposable fabric intended for short-term use by an individual patient

# DELLOCH HIP PROTECTOR

## HIP PROTECTORS

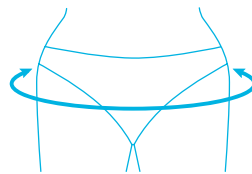
Falls and their related injuries are well known problem for those in both independent home or managed home and independent living. Delloch Hip Protectors have been working to provide solutions that protect and help to prevent falls and reduce injury.

Delloch hip protectors promote independence and encourage mobility. The hip protectors have been tested by experts to help deliver the highest known levels of protection in the event of a fall that does not compromise comfort or the wearable aspect for the person. In our more mature years, the risk of falls increases. These falls can happen whilst at home, or out in the community. The risk of hip fracture increases with age and with medical conditions such as strokes, Parkinson's disease, poor vision, impaired gait and reduced balance. In addition to this, medical conditions such as osteoporosis can cause the bones to weaken and become brittle increasing the risk of fracture from a fall.



### Hip protection is required for someone who has:

- ✓ Had a fall or has had a history of falls;
- ✓ Osteoporosis;
- ✓ Had a stroke or history of strokes;
- ✓ Parkinson's Disease;
- ✓ Poor vision;
- ✓ Limited mobility;
- ✓ History of fainting/dizziness and imbalance;
- ✓ Cognitive impairment.



For accurate measurement, measure around the widest part of the hips (with continence products in place, if worn)

### Summary of Delloch Hip Protection benefits:

- ✓ Internationally tested and approved pads for that extra confidence
- ✓ Comfort Curved pads for a great fit
- ✓ A simple specification system makes it easy for you to get the correct product fitted in the right position
- ✓ Comfortable and stylish undergarment designs
- ✓ Easily washed and cleaned
- ✓ Design options to suit your lifestyle and the level of protection required

## PLUS SEAT

The PLUS Seat is designed to relieve muscle tension and reduce the body's natural pressure points for total sitting comfort.

By improving posture, increasing blood flow, and reducing pressure, you can be healthier when you sit. It works on any type of seat, from car seats to hard seats. Its contoured design relieves pressure on the hips so they remain upright in proper alignment, reducing stress on the lower back. The PLUS Seat won't absorb moisture or generate heat. In fact, it's made from waterproof closed-cell EVA material for easy cleaning. Its patented design reduces seat surface temperatures and relative humidity by providing continuous airflow for ultimate comfort.

- Airflow – Port and pillar design provides continuous airflow to reduce temperature and moisture to the skin.
- Weight Distribution - Bottom surface uses shorter pillars allowing the pelvis to immerse into the seat, alleviating peak pressure points.
- Correct Posture – Contoured design helps keep the pelvis in proper alignment, reducing stress on the lower back.
- Waterproof – Durable closed cell EVA is completely waterproof and heat resistant to 158F / 70C.



**NEW!**



# PATIENT TRANSFERS & SLIDE SHEETS



## AIRPAL TRANSPORT STANDS

Mobility and Storage System for the AirPal Transfer Pad System with single or double air supply ring and storage basket.

## AIRPAL GROUNDED AIR SUPPLY

A compact and lightweight portable Air Source for the AirPal Transport Pads. It can be used independent of the AirPal Stand. Includes a six foot air supply hose.

## N SERIES

This 47" Length Reusable Transfer Pad is constructed of nylon twill fabric with an anti-bacterial patient surface of special Four-Way-Flex fabric. Fully machine launderable (wash and dry) AirPal offers different width pads for use with various size surfaces and patients.



## SINGLE PATIENT STAY

Single Patient Stay 78" Disposable Transfer Pad, may be used for multiple transfers during patient hospital stay. Safe Working Load 450 kg.



## SLIDESHEETS

- Slide sheets help reduce sheer and friction when moving residents in beds, turning residents on their sides or transferring residents from a bed
- Training is required as incorrect application can cause injury to both carers and residents
- For residents who has fallen into a confined space; slide sheets can be used to move the residents along the floor to a location where a hoist can be used

## L SERIES

Our L series pads are the same as our N Series, except the Four-Way-Flex patient surface is replaced with a Hi-Fluid, Conductive material that is often used to cover operating tables and stretcher pads.

Cleaned by wipe down procedure these pads are typically used in areas where excess fluids could be encountered such as ER, Trauma, OR, Cardiac Cath, Lab and Obstetrics. Safe working load 500 kg.



# MEET THE EQUIPMENT TEAM



**KIRSTIE HRSTICH**  
EQUIPMENT COORDINATOR



**CHRIS VANGO**  
PRODUCT SPECIALIST



**NICK TARR**  
PRODUCT MANAGER



**JOHN PAUL**  
PRODUCT MANAGER



**MIKE FAGAIAVA**  
EQUIPMENT COORDINATOR

0800 658 814 | [uslequipment.co.nz](http://uslequipment.co.nz)  
[uscustomerservices@uslmedical.co.nz](mailto:uscustomerservices@uslmedical.co.nz)

