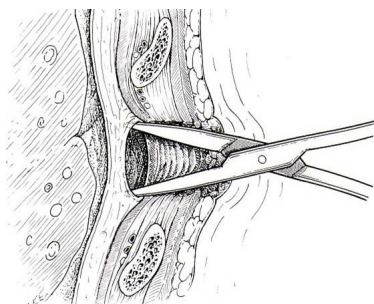
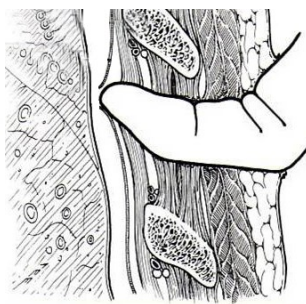
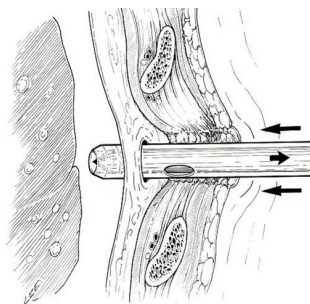
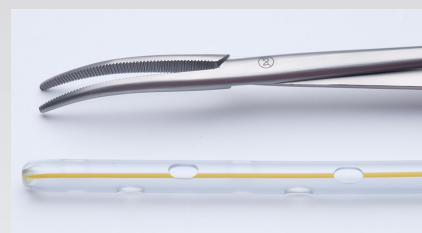




- **BLUNT TIPPED CATHETER:** Used in conjunction with a stiffener so the catheter can be inserted in a more controlled manner.
- **CURVED ROBERTS FORCEPS:** To allow controlled dissection of the intercostal muscles over the rib.
- **RADIOPAQUE STRIPE:** to allow accurate checking of catheter position.
- **COMPLETE INSERTION PACK:** Including a gown, drapes, suture and dressings.


Initial entry

Blunt dissection

Drain insertion

The **Rocket® Blunt Dissection Chest Drain Insertion Pack** is available for those instances when it would be inappropriate or difficult to use a small bore Seldinger chest drain such as a traumatic incident or the drainage of blood.



Description	Size FG	Order Code
Rocket® Blunt Dissection Chest Drain Insertion Pack Curved Roberts forceps, safety scalpel, catheter with radiopaque stripe & stiffener, syringe, connectors, suture, ward procedure pack including gown, drapes, swabs, sponges, 10ml syringes, gallipot, wound dressing. Sterile, for single use in cartons of 5 units.	26 Fg	R54549-26-PK
	28 Fg	R54549-28-PK
	32 Fg	R54549-32-PK