

FOCUSING on moving and handling 2023

SHOW YOUR ABILITY

BURE XL
Powered
Walker
240kg

Move
Aqua Transfer
Platform

EasyGlide
extra long

LimbSling
disposable

FootStool &
FootStool cover

Bure Rise and
go double walker

EasyGlide oval

Aqua
Platform

TurningSling

BURE XL
Powered
Walker
240kg

EasyGlide
extra long

ReTurn 7500i
and ReTurnBelt disposable

Slide
sable

EasyGlide oval

ua equipment



CONTENTS

SYSTEMROMEDIC

Minilift & Thorax Sling	3
Repositioning Products.....	4-5
Walker & Transfer.....	6
Mobile Hoist EVA 600EE & 400EE.....	7
Slings	8

VIKING

Hoists.....	10
Golvo 9000.....	11

ASPIRE A150.....	12
------------------	----

LIKO

Paediatric slings	13
Adult slings	14
Single use slings.....	15
Reposheet & multistrap.....	16

KIRTON posture support

DUO Major.....	17
Florien II	18
GE - II.....	19

DYNA-TEX pressure relieving cushions ...	20-21
------------------------------------------	-------

Quattro Acute.....	22-23
--------------------	-------

DYNA-FORM mattresses	24-25
----------------------------	-------

CAREWELL Bed.....	26
-------------------	----

Let us help you make the perfect bed.....	26
-------------------------------------------	----

Patient transfers & slide sheets	27
----------------------------------------	----

USL Equipment Team.....	28
-------------------------	----

For the
full range of
SystemRoMedic™
products contact
USL Customer
Services
0800 658 814

SystemRoMedic™

ROMEDIC MINILIFT - 3 OPTIONS

The RoMedic MiniLift160 is a mobile sit-to-stand lift which has been developed to gently assist the user when rising from a sitting to a standing position. When this is combined with the appropriate lifting accessories, the user gets support under the feet, for the front of the lower legs and behind the back, which provides for a safe and secure, yet active sit-to-stand procedure.

- Unique solution – extremely comfortable, active sit-to-stand with natural movement pattern
- Small and convenient
- Easy to manoeuvre
- Soft, adjustable lower leg support
- Low foot plate with anti-slip surface
- Lockable rear castors



ROMEDIC RETURN 7500i

Safe and active sit-to-stand and transfer – without any heavy lifting. The ReTurn7500i has a rising ladder which has an opening for quick and easy hooking of the ReTurnBelt and is appropriate for most adult users weighing max. 150 kg



ROMEDIC THORAX STAND UP SLING

ThoraxSlings are specially adapted sit-to-stand vests that are available with seat supports and used in combination with SystemRoMedic™ sit-to-stand lifts MiniLift200, MiniLift160 and MiniLift125.



ROMEDIC RETURN BELT

RoMedics ReTurn Belt is an excellent complement to the ReTurn when there is a need for support and stability. ReTurn Belt can also be used separately, for support during sit-to-stand and to stabilise the user in an upright position during standing training, gait training and transfer.



ROMEDIC ONEWAY SLIDE

Ideal for positioning in a chair or a wheelchair

OneWaySlide is a sliding mat with many functions. The main one improves sitting positions in chairs or wheelchairs. It effectively slows forward movement yet slides backwards, making it easy for the user to help the patient move into a more comfortable position.



ROMEDIC ONEWAY SLIDE WITH HANDLES

OneWaySlide is a sliding mat with many functions. The main one improves sitting positions in chairs or wheelchairs. It effectively slows forward movement yet slides backwards, making it easy for the user to help the patient move into a more comfortable position. It is easy just take the handles and pull – without a great use of force.



ROMEDIC EASYBELT HUG

The EasyBelt Hug is used as support for sit-to-stand transfers and for sitting transfers from the wheelchair to the bed, toilet or car. EasyBelt can also be used as support when the patient is standing and walking. EasyBelt has multiple, sturdy handles, both vertically and horizontally, providing the user with a firm grip in all situations.

- Support for all types of manual transfers in Sizes XS - S - M - L - XL

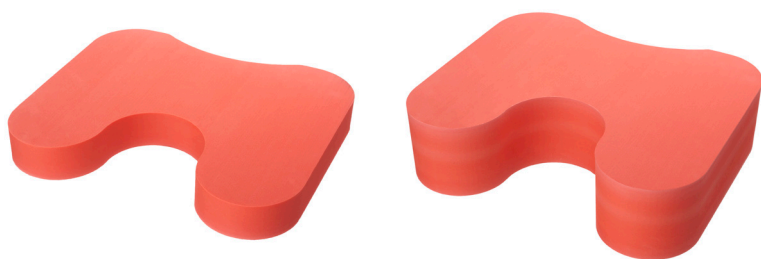


ROMEDIC AUTOSLIDE

Getting into a car can be awkward and hard, but if done easily then this is the key to freedom for many people. The Autoslide is a device that makes it easier to get into cars in a comfortable position.

AutoSlide reduces the effort when turning and moving sideways to readjust the sitting position before and during the journey. If a little more assistance is needed, the handles at the sides of the seat cushion allow for giving a helping hand.

- Size 48cm x48 cm



FootStool cover

ROMEDIC FOOTSTOOL

FootStool is used to raise the position of the patients knees to enable a safer transfer when in a seated position. It also provides support under the user's feet during toileting or repositioning further back in a chair or wheelchair.

This is available in two variants with different height; 10 cm or 5 cm

- An indentation in the front edge of FootStool enables the carer to stand as close as possible, which gives a better posture
- In the rear edge there is a more shallow indentation for a toilet chair or other obstacles
- FootStool is made of cellular plastic, a sturdy material which doesn't slide on the underlying surface
- The surface is easy to clean with a soap or alcohol solution

For the full range of SystemRoMedic™ products contact USL Customer Services 0800 658 814

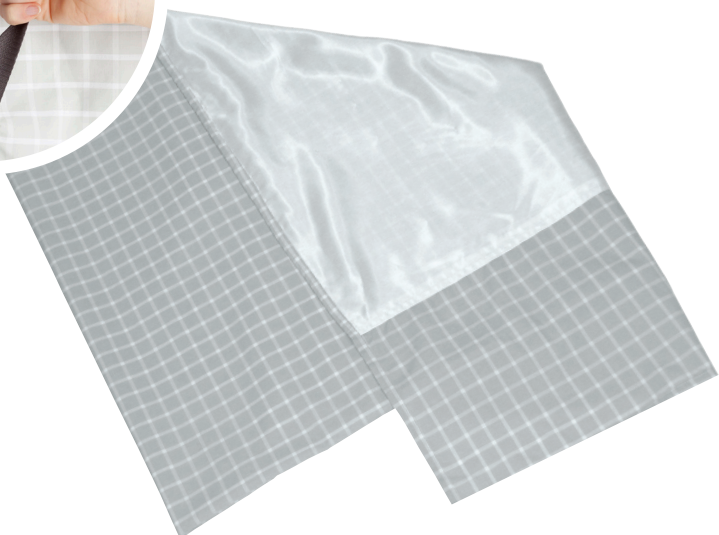


WENDYLETT RANGE

Comfortable Functional Material. A transfer aid which helps prevents pressure injuries

The WendyLett family consists of

- WendyLett is a satin sliding sheet and a base sheet to be combined with
- WendyLett2Way, a drawsheet for sliding sideways or
- WendyLett4Way, a sliding drawsheet for multi-directional sliding.
- WendyLean pillow cover
- Mattress positioning cover





BURE RISE & GO DOUBLE WALKER

The Bure Rise & Go is a very cost-effective walker enhanced with a patented power rise function. Thanks to the electric power rise function, Bure Rise & Go acts as a combined stand-up, mobility and walking aid all in a single product. Rise & Go is now also available with electric walking frame widening. Flexible widening combined with the lower height above the walking frame enhances versatility regardless of the patient's situation in hospital or at home.



MOVER AQUA TRANSFER PLATFORM

Mover Aqua is a transfer platform developed to provide smooth, convenient transfer for indoor/flat surfaces. It's easy to use and helps transfer patients safely and conveniently. The Mover has a narrow base frame and double castors for easy manoeuvrability even in confined spaces. Mover has a stable platform and comfortable seat cushions, and thanks to constant eye contact with the carer, the user always feels comfortable and confident. The new MoverAqua is specially designed to be used also in showers. PU cushions together with stainless solutions makes this possible.

Features

- This is a non powered unit.
- Max User Weight 180kg
- Width - External 63.5cm
- Width - Step 38cm
- Height 107cm
- Length 4cm
- Seat Height 83cm
- Unit Weight 28kg

BURE XL POWERED WALKER 240KG

Bure XL was designed for the larger patient and therefore provides extra space and strength.

Because extra powerful aids are required in the care and nursing of heavier patients, Bure XL is always supplied with electric drives.

Features

- Width 88cm
- Max user weight 240kg
- Length 78cm
- Height 91-131cm
- Armrest/Internal dimensions 44-62cm

- *These measurements are based on the walker having 125mm casters



For the full range of SystemRoMedic™ products contact USL Customer Services 0800 658 814



ROMEDIC EVA600EE MOBILE HOIST

The RoMedic Eva600 is a versatile mobile patient lift for all lifting situations and for users weighing up to 270 kg.

All variants of Eva600 are supplied complete and ready to use, fitted with a stable sling bar with reliable safety latches and a hand control. The sling bar is standard width (450 mm) which is suitable for most users and lifting situations.

- **SWL:** 270 kg
- Aluminium for low weight – easy to manoeuvre
- Built-in charging



ROMEDIC EVA450EE MOBILE HOIST

The RoMedic Eva450 is a versatile mobile patient lift for all lifting situations and for users weighing up to 205 kg.

- **SWL:** 205 kg



ROMEDIC CHARDER HOIST SCALES

The RoMedic Charder MHS2500 scale set can be used together with stationary or mobile lifts for weighing of users. Charder MHS2500 is available in two models; one for users weighing up to 400kg.



STANDARD MODEL FOR USERS WITH GOOD HEAD STABILITY

BasicSling is designed for use in most common lifting situations and when the patient has poor torso stability but good head stability.

- Divided leg supports; easy for the caregiver to apply and remove, the user does not sit on the lifting sling
- Shoulder-high back; the user is supported from the tailbone up to the shoulders and under the legs
- Upright seated posture
- Standard model, suits most users with good head stability
- BasicSling in polyester net is available with or without reinforced leg supports
- Pocket at lower edge for easier application
- SWL 300kg/660lbs.

Accessories:

AdjustmentLoop, HeadSupport, SoftLegSupport, StrapsPadding, NameTag



STANDARD MODEL FOR USERS WHO NEED A LOT OF SUPPORT

HighBackSling is designed for use in most common lifting situations and when the user needs extra head support. HighBackSling can also be used for lifting from a recumbent position on the floor.

- Divided leg supports; easy for the caregiver to apply and remove, the user does not sit on the lifting sling
- High back; the user is supported from the tailbone up over the head and under the legs
- Slightly reclined seated posture
- Standard model, suits most users
- Removable plastic stays give the head support extra stability
- HighBackSling in polyester net is available with or without reinforced leg supports
- Pocket at lower edge for easier application
- SWL 300kg/660lbs (disposable material: SWL 200kg/440lbs)

Accessories:

AdjustmentLoop, SoftLegSupport, StrapsPadding, NameTag



LIKO™ VIKING - L

With a lifting capacity of 250 kg, Viking L is ideal for most common lifting needs, and offers a flexible lifting solution. The extensive application area means that for lifting medium-weight or larger patients, the Viking L is suitable in most situations, e.g. lifting from the floor, to/from the toilet, horizontal lifting, and/or gait training.

- **SWL:** 250kg
- **Weight:** 37.4kg
- **Lifting Height:** 203cm



LIKO™ VIKING - XL

For the most demanding lift. Lifting heavy patients entails great responsibility. Although Viking XL has been specially developed for very heavy patients, it is also suitable for average-sized people. Despite its size, Viking XL weighs only 43kg and is very easy to handle.

- **SWL:** 300kg
- **Weight:** 42kg
- **Lifting Height:** 187cm





The Golvo 9000 lift offers the functional advantages of an overhead lift with the flexibility of a mobile lift. In combination with the extensive range of Liko accessories, Golvo is ideal for common lifting situations across a variety of care environments.



- Vertical lifting motion with flexible lift strap is ideal for horizontal lifting, ambulation and lifting from the floor
- Parallel base-width adjustment contributes to easier lifting of patients or residents to/from chairs, beds and the floor
- LowBase version allows for even greater clearance under low beds or stretchers versus the standard model
- Armrests help to support patients during ambulation, as well as making it easier for caregivers to manoeuvre the lift

- **SWL:** 200kg
- **Weight:** 41.6kg
- **Lifting Height:** 1.81m

ASPIRE A150



The Aspire 150F is a lightweight and portable folding patient lifter designed for home and community environments.



Features

- **Off Set Leg Design:** Provides additional accessibility around chairs and furniture in the home
- **Leg Function:** Simple foot operation to open or close legs for lifting stability or accessibility
- **Quick Release Yoke Attachment:** One touch release and attach mechanism, designed for the busy caregiver. Padded yoke for added patient safety
- **Build Quality:** Strong powder coated aluminium frame with industry leading Linak electronics and warranty provision – 5 year warranty on Frame
- **Quality Locking Castors:** 2 x 100mm rear locking castors for safety and manoeuvrability

- **SWL:** 150kg
- **Item Weight:** 32.9 kg
- **Tested and compliant to AS/NZS ISO 10535:2011**
(the Au/NZ standard for hoists)



TEDDYSLING ORIGINAL™ LIKO™ ORIGINAL SLING™, MOD. 26

This sling is suitable for lifting to/ from a seated/semi-reclining position or from the floor, if the child does not need special support for the head. Supports the entire back up to the shoulders.

- Belt with SafetyBuckle

SIZES: XS, S

FABRICS: Teddy-patterned knitted polyester (children), polyester (S only), net polyester, plastic-coated net (S only)



TEDDYVEST FOR STANDINGSHELL™ LIKO™ VEST FOR STANDINGSHELL™ MOD. 67

We have developed the Vest for StandingShell for the difficult lifting of a child in a standing shell from the floor to a standing position. The lift takes the entire weight, and the child is lifted securely, with comfortable support for the whole body and the head.

- Head support and padded leg harness included

SIZES: XXS, XS, S



TEDDY HYGIENE VEST/LIKO™ HYGIENE VEST™

We developed these slings for transfers to and from the toilet, but they can also be used for other lifting situations where an upright and steady sitting position is desired. The vest lifts around the upper body, which prevents any tendencies for the child to collapse. Children with spasticity problems often sit well in Mod. 55.

- Reinforced leg supports
- Model 55 has a head support

MOD. 50: SIZES: XXS, XS FABRICS: Teddy-patterned knitted polyester (children), polyester (XS only)

MOD. 55: SIZES: XXS, XS FABRICS: Teddy-patterned knitted polyester (children), polyester





LIKO™ SOFT ORIGINAL HIGHBACK SLING™, MOD. 26

- Suits most patients
- Best choice for transfers from horizontal (lying) position
- Optimised fit and comfort
- Provides extra comfortable support for the head
- Comfortable reclined sitting posture



LIKO™ HYGIENE SLING™ MOD. 45, 46

Hygiene Sling™ Mod. 45 is equipped with a SafetyBelt™ which lifts around the upper body for extra stability. Besides the SafetyBelt™, Mod. 46 is also equipped with an extra high back support.

- Equipped with SafetyBelt™, suitable for patients with poor torso stability
- Enables dressing/undressing during hygiene transfers
- Can be used with one of the patient's arms on the inside
- Mod. 46 is equipped with back support which provides extra support, safety and comfort

SIZES: XS, S, M, L, XL *

FABRICS: Polyester, teddy-patterned knitted polyester (children)

LIKO™ HYGIENE VEST™ MOD. 50, 55

MOD. 50:

- Suitable for patients with high/low tone
- Facilitates dressing/undressing during hygiene transfers
- Supports and lifts around the upper body
- High security for hygiene transfers
- Upright sitting posture

MOD. 55:

- Excellent for patients with spasticity
- Facilitates dressing/undressing during hygiene transfers
- Gives good support for back and head
- High security for hygiene transfers
- Supports and lifts around the upper body

SIZES: XXS, XS, S, M, L, XL, XXL, XXXL *

FABRICS: Polyester, teddy-patterned knitted polyester (children)



LIKO™ AMPUTEE SLING

Liko Amputee Sling is a safe, easy-to-use sling that has been specially designed as an aid to lifting patients with high double-sided leg amputations. We also recommend the Amputee Sling for patients who are not amputees, but who tend to slide out of similar types of slings. Amputee Sling may be appropriate for other patients, such as single-sided amputees.



LIKO™ SOLO SLING (SINGLE PATIENT USE)

- Disposable one use
- Products for short-term use

The spread of multi-resistant bacteria (MRB) within healthcare, along with the increased demand for products for short-term use, has led to the development of Solo™ – a range of disposable lifting accessories.

What is unique about most of the Solo™ products, compared to our ordinary lifting accessories, is that they are made from a very strong non-woven material. Solo RepoSheet™ is the exception, as this product is made in a cotton/polyester fabric.

Solo™ products are not intended to be washed but are to be disposed of once they have become soiled or when the patient no longer needs them. In other words, they are designed for short-term use by one particular patient.

Apart from being an effective solution for preventing the spread of infection, the lifting accessories also have economical and practical advantages: laundering is eliminated and they are always immediately available on the ward.



OTHER SINGLE PATIENT USE PRODUCTS

Liko™ Solo RepoSheet™

Solo RepoSheet™ is used to move up patients who have slid down in the bed or to turn bed-ridden patients.

Liko™ Solo Octo

LiftSheet™ Solo Octo LiftSheet™ is intended for horizontal lifting with Liko™ OctoStretch™.

Liko™ Solo LiftSheet

1800™ Solo LiftSheet 1800™ is intended for horizontal lifting with the LikoStretch Mod. 600 IC™.

Liko™ Solo LiftSheet

1900™ The Solo LiftSheet 1900™ is intended for horizontal lifting with LikoStretch 1900™.

Liko™ Solo MultiStrap™

Solo MultiStraps™ are used to lift and hold parts of the patient's body, in order to facilitate examination, care and treatment.

Liko™ Solo SupportVest™

Solo SupportVest™ is used with the Liko™ Sabina™ sit-to-stand lift.

Liko™ Solo Cover for Liko™ Ultra LiftPants™

Solo Cover is a disposable accessory for Ultra LiftPants™ for Bariatric gait training.

**FURTHER
CLINICAL
INFORMATION
AVAILABLE**



LIKO™ REPOSHEET™

Everybody knows that it is almost impossible to lie still in bed — not even when we sleep do we lie still. Even severely disabled persons sometimes end up wrongly positioned in the bed. Consequently, lifting and repositioning patients is one of the most common operations around a bed.

Research* also shows that many work-related injuries occur here. When a patient is to be moved higher up in the bed or turned, Liko™ RepoSheet™ is an excellent aid. The Liko™ RepoSheet™ is placed under the patient and can be used both in combination with and instead of an ordinary sheet during the entire care period. (Liko™ Solo™ RepoSheet™ is always used together with an ordinary sheet. With Liko™ RepoSheet™ and an overhead lift, it becomes possible for just one caregiver to reposition a patient in bed.



LIKO™ MULTISTRAP™

MultiStrap™ is a lifting accessory from Liko™ which completes the other lifting and repositioning aids in Liko's wide range. MultiStrap™ has been developed to meet a variety of needs in care and can be used to hold arms, legs and other parts of the body, for example, during treatment or washing. Together with a patient lift, MultiStrap™ facilitates many heavy lifting tasks such as wound care (e.g. burn injuries), hygiene procedures, treatment (e.g. catheterizing or dressing wounds), examinations, placement of bedpans and dressing/undressing.

The MultiStraps can also be used to turn a patient to the side. MultiStrap™ can be used individually or in pairs. For turning in bed, we recommend using it in pairs with one of the wider models.

Important Features

- Facilitates lifting/holding e.g. arms and legs during treatment/washing
- Three washable MultiStraps in different sizes
- Also available are MultiStraps in disposable fabric intended for short-term use by an individual patient

DUO MAJOR

The Duo is the most versatile seating system designed for those who are unable to maintain their posture and need high levels of pressure relief.

The adjustable and key features of the Duo ensure the core principles of seating are met for each individual.

Accessories:

- Lateral supports
- Leg-laterals
- Pommel
- Leg rest bracket to achieve a 25° negative angle
- Flat seat board
- Foot sandals
- Ankle huggers
- Lap-belts and pelvic positioners
- Universal mobile tray
- Weight limit: 160kg



Postural seating equipment improves function, affect and engagement in everyday life

These case studies are part of a paper on *Postural Seating Equipment Improves Function, Affect and Engagement in Activities in Aged Care*. Reproduced courtesy of Madelyne Glover & Julia Salman both Senior Occupational Therapists. For the full paper contact Nick Tarr at nick.tarr@uslmedical.co.nz



Unsupported pelvis, truck and head, abducted legs and unsupported feet leading to lateral trunk flexion and rotation, collapsed kyphotic posture and no head support preventing engagement.



Provided stable postural support at pelvis and trunk leading to symmetrical supported posture enabling hand function and visual engagement.



FLORIEN II

A dynamic and highly mobile seating system, the Florian II enables greater independence by promoting correct posture and facilitating a supportive, comfortable seated position.

The removable arm is a fantastic feature of this chair, making it suitable for those who are hoisted or able to side transfer.

Accessories:

- Height adjustable flip up footrest
- Adjustable lateral supports
- Adjustable headrest
- Lap-belt
- Pelvic positioners
- Universal tray
- Flat seat board
- Weight limit: 180kg

Older people in residential aged care often have mobility restrictions due to comorbidities or frailty. They sit for longer, are less able to adjust their position, and are less able to engage in meaningful activities due to postural restrictions



BEFORE

Unsupported pelvis, trunk and head, collapsing kyphotic posture leading to arms holding him upright impacting safety and function.



AFTER

Tilt, recline and backrest contour supported pelvis and reduced kyphosis while minimising negative effects of gravity, arm and head support improved safety and engagement.

GE- II

ffering excellent postural support, positioning and pressure relief, the GE-II is the perfect choice for those who want their chair to deliver on both substance and style.

This elegant chair has been designed to ensure that all the key adjustments are simple and effective, meeting the needs of both ambulant and non-ambulant users, as well as carers, in a wide variety of environments.

Accessories:

- Negative angle legrest
- Choice of Headrest
- Leg-Laterals
- Laminated Tray with Straps
- Headcap
- Lap-Belts and Pelvic Positioners

Available in:

- Manual, power or power with regulated motion

Weight Limit:

- 180kg / 28 stone



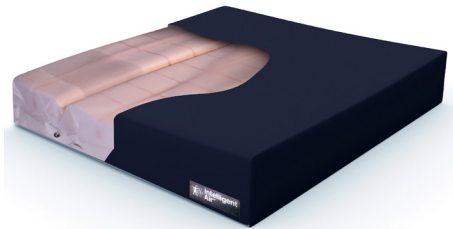
Many occupational therapists in aged care recognise the need for assistive equipment for postural support, pressure care, comfort and safety



Unsupported pelvis, truck and head, rotation, lateral trunk flexion, windswept legs, no arm support and restricted head movement increasing risk of pressure injury.



Appropriate width and depth provided stable upright pelvis, use of tilt enabled symmetrical relaxed posture for function.

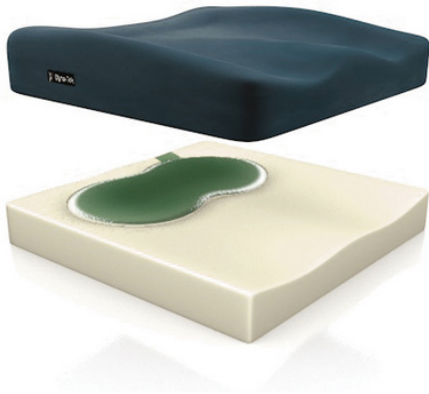


DYNA-TEK™
INTELLIGENT AIR

The Dyna-Tek™ Intelligent Air Cushion sets a brand new standard in innovative wheelchair seating, delivering superior ‘bespoke’ pressure redistribution without the need for any set-up or re-pumping air lost over time.

VERY HIGH **RISK**

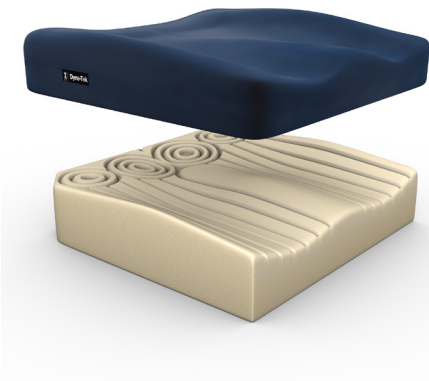




DYNA-TEK™ GEL CUSHION

The Dyna-Tek™ Gel Cushion, designed using the latest polyurethane gel. By incorporating the most advanced raw materials during the manufacturing process, enhanced postural management and greater pressure re-distribution is achieved.

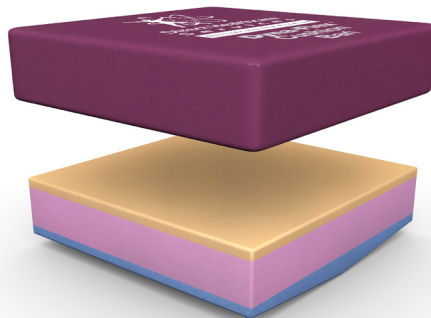
VERY HIGH RISK



DYNA-TEK™ OWL CUSHION

The Dyna-Tek™ Owl Cushion is a uniquely designed postural management product, providing exceptional pressure re-distribution via it's "Owl contoured design", specifically made for users considered to be at "High Risk" of pressure ulcer development.

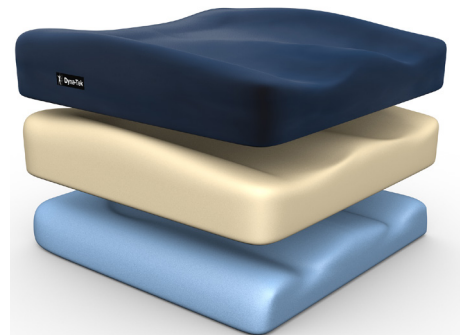
HIGH RISK



DYNA™ FLEX CUSHION

The Dyna™ Flex Cushion incorporates the most exclusive combination of visco elastic and CME foam technology, providing outstanding pressure re-distribution and great patient comfort. Suitable for patients considered to be at "High Risk".

HIGH RISK



DYNA-TEK™ POSTURE VISCO CUSHION

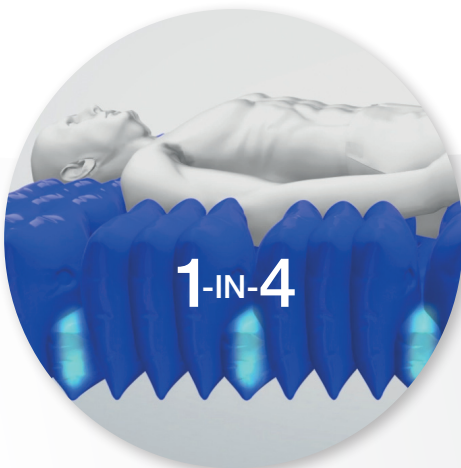
The Dyna-Tek™ Posture Visco Cushion is designed to create better postural management, along with greater pressure re-distribution. Made for users considered to be at "High Risk" of pressure ulcer development.

HIGH RISK

QUATTRO[®] acute



FOR THE HIGHEST LEVEL
OF PRESSURE MANAGEMENT



ACTIVE 1-IN-4 CELL CYCLE

The active 1-in-4 cell cycle supports 75% of the patient's body at all times, on groups of three inflated cells, whilst the fourth cell deflates sufficiently to redistribute the pressure and encourage tissue reperfusion.

Additional benefits include enhanced patient comfort, less awareness of support surface movement and a reduction of stimulus-related complications such as muscle spasm.



TISSUEGARD™

TISSUEGard enables the partial immersion and envelopment of the patient into the support surface, reducing the pressure on the patient's skin and decreasing the pressure differential between inflated and deflated cells, which helps reduce tissue strain and associated shearing forces.



DEEP CELL THERAPY™

DEEP CELL THERAPY allows the cells of the QUATTRO Acute to run at lower internal pressures. This minimises the pressure applied to the patients skin and subcutaneous tissues during the cycle.

The QUATTRO Acute and QUATTRO Plus Care Systems combine an active 1-in-4 cell cycle, with TISSUEGard, Ortho-differential support and a multi-stretch cover. This results in significant periods of tissue offloading during each cycle and provides patients with **OPTIMAL PRESSURE RELIEF.**

**NOW
AVAILABLE
KING
SINGLE**



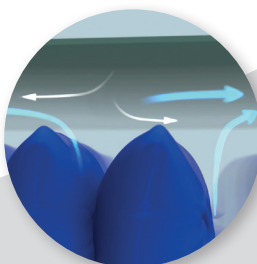
ORTHO-DIFFERENTIAL SUPPORT™

ODS results in firmer outer edges of the mattress which facilitate patient transfers and provide extra support, safety and comfort for larger or heavier patients. It also creates a softer central area of the mattress, ideal for smaller, lighter patients.



MULTI-STRETCH COVER

The multi-stretch cover promotes tissue offloading during cell deflation and reduces shear and friction during patient movement or manual repositioning. The material is waterproof, moisture-vapour permeable and all seams are welded to protect the inside of the mattress from fluid ingress.



MICROCLIMATE MANAGEMENT

The waterproof, moisture-vapour permeable properties of the multi-stretch cover, combined with a low-air-loss feature within the mattress, helps manage the skin 'microclimate' between the patient and support surface.



UPDATED PUMP DESIGN

The QUATTRO Acute and Plus control unit has been redesigned to create a smaller unit with reduced joins, connections and surface area to aid in disinfection and infection control procedures.

Pressure Relief Index

Interface pressure testing performed in accordance with the proposed S3i test protocol⁵ clearly demonstrates low interface pressures during active therapy. The unique DEEP CELL THERAPY used in QUATTRO Acute is a key factor in the exceptional offloading capability of this mattress.





MERCURY
ADVANCE SUPPLIED
IN EITHER

- Single
- King Single
- Bariatric
- Double
- Queen

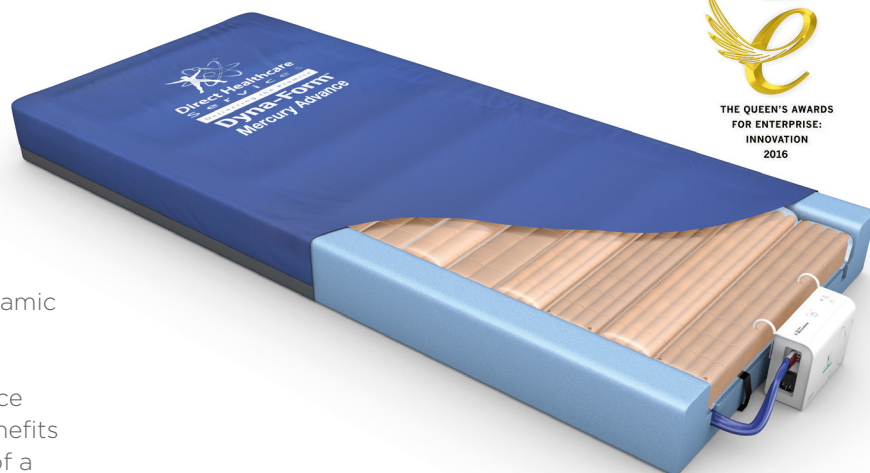
MERCURY ADVANCE - “WINNER OF THE 2016 QUEENS AWARD FOR INNOVATION”

The Dyna-Form™ Mercury Advance is a dynamic mattress replacement system combined with the benefits of modern foam technology. It is specifically designed for patients considered to be at “High Risk” of pressure ulcer development.

Offering high levels of patient comfort, this unique system has the facility to “step up” to that of a dynamic mattress when clinically these features make it particularly beneficial for use within the patient’s home or palliative care environment and help reduce logistic and decontamination costs. The clinical benefits of a single system are equally applicable to those of a modern hospital setting.

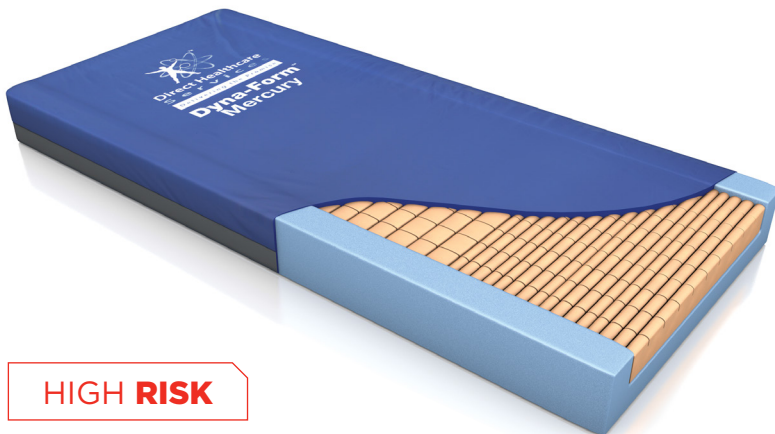
A higher maximum weight capacity (up to 40stone/254kg), allows the product to meet the modern challenges of those heavier clients. All component parts are interchangeable and replaceable, maximising product life and reducing environmental impact.

The outer cover comprises a high frequency welded, multi stretch and vapour permeable fabric, satisfying the strictest infection control policies. Similarly, the mattress’ function can be downgraded as the patient’s condition improves.



HIGH RISK

VERY HIGH RISK



HIGH RISK

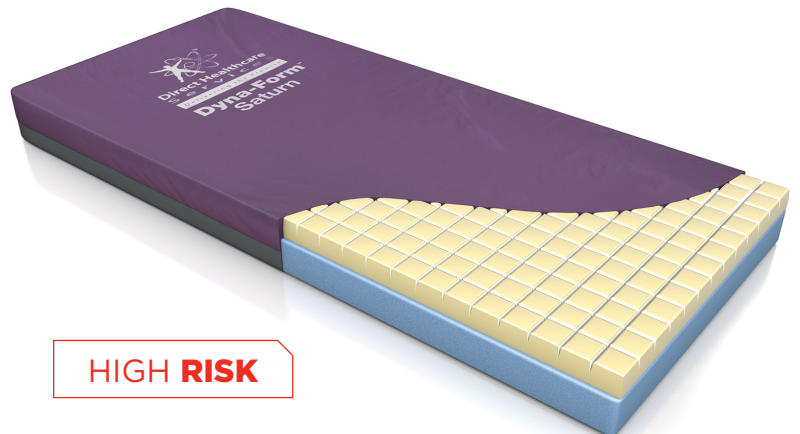
STATIC MERCURY

The Dyna-Form™ Mercury mattress is specifically designed for users considered to be at “High Risk” of pressure ulcer development. Comprising of a specialist “castellated cut” and blends of the finest quality Combustion Modified High Resilient foam (CMHR) this product provides not only the best pressure re-distribution properties, but great patient comfort & product longevity. Side Wall construction enables primary stability for patient transfer purposes. Complete with a durable, multi-stretch, vapour permeable cover and a toughened polyurethane base, the Mercury mattress provides an important contribution towards the infection control and tissue viability standards of a modern hospital, nursing or homecare environment.

SATURN

The Dyna-Form™ Saturn mattress is designed for users considered to be that of ‘High Risk’ of pressure ulcer development and for patients requiring complete comfort, whilst maintaining the highest pressure care support from a static mattress.

By using a blend of temperature sensitive, visco elastic foam at patient interface with the finest quality CME foam, the Dyna-Form™ Saturn provides excellent pressure re-distribution properties, but with patient comfort foremost considered within its design.



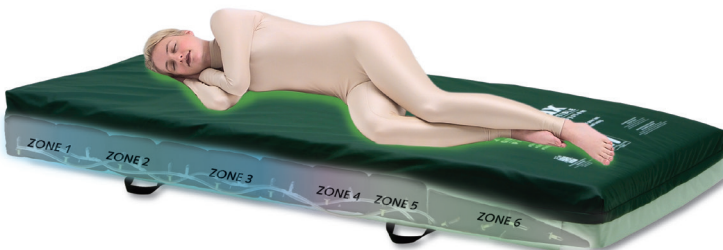
HIGH RISK

ACCUMAX

The top of the line AccuMax™ Quantum™ Convertible is a non-powered pressure relief mattress that can be converted into a powered pressure relief mattress.

Some special features include a hand-crafted co-polymer and fibre topper, designed therapeutic pressure zones, plus a gentle heel slope.

These features all provide unsurpassed patient benefits and comfort. The Convertible also includes our exclusive Airport™ connection system as standard equipment to allow quick and easy conversion to a powered system with gentle, alternating pressure capability - as easy as 1, 2, 3!



VERY HIGH RISK

CAREWELL BED

Feature packed Oden may be the answer for your home.

Safe Working Load: 215 kg
Height range: 210 to 760mm

- X lift functionality
- Head tilt functionality
- Electric three function bed
- Electric knee break
- Central Locking 125 mm Castors
- Epoxy powder coating
- In built leg extension
- Wood grain head and foot board
- Removable metal infection pads



LET US HELP YOU MAKE THE PERFECT BED.

Mattress protector, fitted sheets, pillow cases, linen protectors, blankets and bedspreads.



SLEEPKNIT BOTTOM FITTED SMART SHEET

Smooth, plated, cotton/polyester linen provides maximum resident comfort and great convenience for caregivers.



SLEEPKNIT TOP FITTED SHEET

- Unique foot-ease feature
- Semi-fitted at foot end, ensures sheet stays tucked in.
- Knitted



UNDERBLANKET FULL MATTRESS COVER

Full mattress underblanket with elastic on corners to hold in place.

PATIENT TRANSFERS & SLIDE SHEETS



CAREMED SPU TRANSFER PADS

Single Patient Use Disposable Transfer Mattress moves a patient on a soft nylon PVC air mattress inflated with low pressure, high volume air. Holes in the underside allow air to escape. The escaping air acts as a lubricant, reducing friction, making movement of the mattress and the patient effortless.

Comes in sizes:
34"(W) x 78"(L), 39"(W) x 78"(L),
50"(W) x 78"(L)

- Patient Transfer Mattress
Max weight 1000lb or 450kgs
- Sewn construction
- Latex Free product
- Top: Polypropylene Non-Woven fabric
- Bottom: Anti-Bacteria nylon PVC fabric



CAREMED AIR BLOWER UNIT

Air supply unit to be used with CareMed Transfer pads.

Product Specification

- 34(L)*19(W)*20.5cm(H) total weight 5.5kg
- AC110V/60Hz and AC220/50Hz
- Max Air Flow: 3,500 L/min



SLIDESHEETS

- Slide sheets help reduce sheer and friction when moving residents in beds, turning residents on their sides or transferring residents from a bed
- Training is required as incorrect application can cause injury to both carers and residents
- For residents who has fallen into a confined space; slide sheets can be used to move the residents along the floor to a location where a hoist can be used



USL CONTACTS

IAN DURHAM
PRODUCT MANAGER
021 410 894

MOZINA NISHA
EQUIPMENT & MARKETING
CO-ORDINATOR
mozina.nisha@uslmedical.co.nz

0800 658 814 | www.uslequipment.co.nz



0800 265 2186 | uslservice@uslmedical.co.nz

