

How Do You Increase Comfort



While
Improving
**Patient
Outcomes?**

**MINI
ONE®**

Balloon & Non-Balloon Buttons

Three Steps to a Better Balloon Button

1 Reduce Leaks

If your patients' comfort and outcome are being compromised by leaks and their related granulation tissue or erosion, you should switch to the Mini ONE® Balloon.



The Mini ONE® Balloon Button is shaped like an apple to cover more surface area and minimize leaks at the gastrostomy site. It seals better to reduce gastric ulceration.

Other balloon designs have less surface area coverage, and can result in more leakage.

Optional Introducer/Stiffener Makes Insertion Easier

Mini ONE® Buttons are made of a very soft and flexible silicone... that's why they are so comfortable! Being soft and flexible also means that placement of the Mini ONE® Button is easier if you use the optional stiffener that comes with each button.



Customizable Balloons Help Stop Leaks

Mini ONE® balloon fill volume can be easily adjusted for a custom-fit, reducing leaks and improving patient comfort. Our more durable silicone material permits fill variations to assure the proper fit.

Other balloon button manufacturers strongly recommend a single fill volume (5 ml). Patients don't come in one size and neither should their balloons.



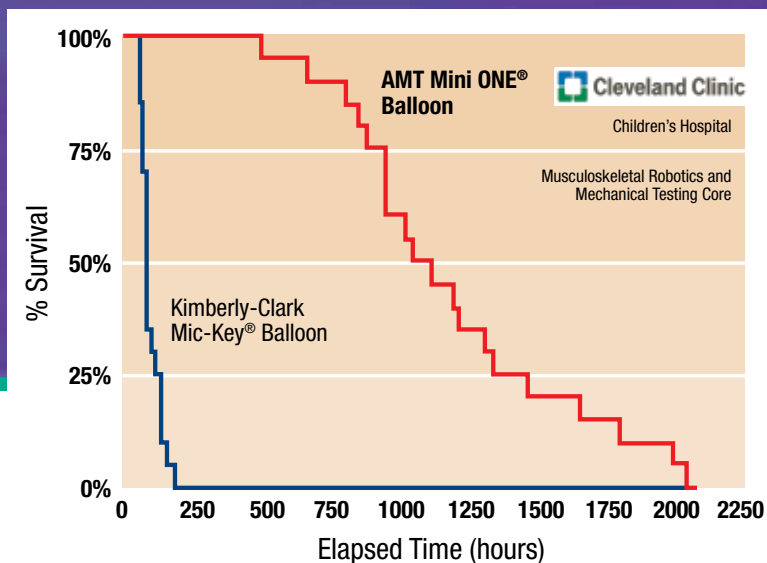
Mini ONE® Balloon Button Balloon Fill Volumes

French Size	Minimum	Recommended	Maximum
12F	2 ml	2.5 ml	3 ml
14F	3 ml	4 ml	5 ml
16F	4 ml	6 ml	8 ml
18F	6 ml	8 ml	10 ml
20F	7 ml	10 ml	15 ml
24F	7 ml	10 ml	15 ml

Videos on how to clean and use the Mini ONE® balloon button are available at www.appliedmedical.net

If your Balloon Mini ONE® Button was placed surgically, consult with your healthcare provider before adjusting fill volumes

Side-by-Side Product Comparison Balloon Life: Mini ONE® vs. Mic-Key®



2 Increase Balloon Life

Tests at the Cleveland Clinic have shown significantly longer balloon life under controlled laboratory acid test conditions.

- Balloon is made from the highest grade medical silicone
- Stronger and more durable than other balloon buttons
- More compliant and better able to withstand stomach contractions



3 Reduce Skin Irritation and Discomfort

- No hard, bulky external bolster means a lower profile
- Less obtrusive external bolster is much more comfortable for patient
- Flexible bolster is easier to clean around and less likely to create trauma to the stoma site
- The tapered transition from the shaft to the external bolster creates a better seal outside the stomach

Mini ONE® Balloon Button (MIC-KEY® feed set compatible)

12 FRENCH		14 FRENCH		16 FRENCH		18 FRENCH		20 FRENCH		24 FRENCH	
Stoma Length (cm)	Order Number	Stoma Length (cm)	Order Number	Stoma Length (cm)	Order Number	Stoma Length (cm)	Order Number	Stoma Length (cm)	Order Number	Stoma Length (cm)	Order Number
0.8	M1-5-1208	0.8	M1-5-1408	1.0	M1-5-1610	1.0	M1-5-1810	1.0	M1-5-2010	1.5	M1-5-2415
1.0	M1-5-1210	1.0	M1-5-1410	1.2	M1-5-1612	1.2	M1-5-1812	1.2	M1-5-2012	1.7	M1-5-2417
1.2	M1-5-1212	1.2	M1-5-1412	1.5	M1-5-1615	1.5	M1-5-1815	1.5	M1-5-2015	2.0	M1-5-2420
1.5	M1-5-1215	1.5	M1-5-1415	1.7	M1-5-1617	1.7	M1-5-1817	1.7	M1-5-2017	2.3	M1-5-2423
1.7	M1-5-1217	1.7	M1-5-1417	2.0	M1-5-1620	2.0	M1-5-1820	2.0	M1-5-2020	2.5	M1-5-2425
2.0	M1-5-1220	2.0	M1-5-1420	2.3	M1-5-1623	2.3	M1-5-1823	2.3	M1-5-2023	2.7	M1-5-2427
2.3	M1-5-1223	2.3	M1-5-1423	2.5	M1-5-1625	2.5	M1-5-1825	2.5	M1-5-2025	3.0	M1-5-2430
2.5	M1-5-1225	2.5	M1-5-1425	2.7	M1-5-1627	2.7	M1-5-1827	2.7	M1-5-2027	3.5	M1-5-2435
2.7	M1-5-1227	2.7	M1-5-1427	3.0	M1-5-1630	3.0	M1-5-1830	3.0	M1-5-2030	4.0	M1-5-2440
3.0	M1-5-1230	3.0	M1-5-1430	3.5	M1-5-1635	3.5	M1-5-1835	3.5	M1-5-2035	4.4	M1-5-2444
3.5	M1-5-1235	3.5	M1-5-1435	4.0	M1-5-1640	4.0	M1-5-1840	4.0	M1-5-2040		
4.0	M1-5-1240	4.0	M1-5-1440	4.4	M1-5-1644	4.4	M1-5-1844	4.4	M1-5-2044		
		4.4	M1-5-1444			5.0	M1-5-1850				
		5.0	M1-5-1450			6.0	M1-5-1860				
		5.5	M1-5-1455								
		6.0	M1-5-1460								
		6.5	M1-5-1465								

See complete list of AMT feeding extension sets on Accessories page.



All Mini ONE® Buttons
are Mic-Key® Feed Set
Compatible

All Mini ONE® products accept either Mini ONE® or Mic-Key® feed sets.