

## AccuMax Quantum™ Convertible System: Improved Skin Outcomes—With or Without Power

### Advanced Technology for Improved Skin Outcomes

The AccuMax Quantum™ Convertible system features Controlled Release™ technology and the ability to add Alternating Pressure Therapy in seconds. Available as a powered or dynamic non-powered surface, the AccuMax Quantum™ Convertible system is an effective tool for the prevention and management of skin breakdown.

### Anatomically Inspired Pressure Redistribution

The AccuMax Quantum™ Convertible system provides clinically proven, non-powered pressure redistribution and therapeutic support. Its design is anatomically inspired, so it corresponds to the varying levels of interface pressure caused by contact with the body. It then utilizes interconnected air sectors to redistribute that interface pressure.

### Custom Pressure Profile for Any Patient Size or Weight

The Controlled Release™ valve system allows the air sectors to “communicate” with each other, providing a uniformly low interface pressure profile for any patient size or weight. Connect the surface to an adaptable control unit to offer Alternating Pressure Therapy with the touch of a button.

### Alternating Pressure Therapy is available at the touch of your finger

The Premium Alternating Pressure Therapy CU2 control unit offers additional therapy when you need it, helping to reduce your therapy rental costs.

#### At a glance

- Pressure redistribution mattress
- Designed for moderate risk patients to prevent and treat pressure ulcers
- Proven clinical outcomes on Stage III and IV pressure ulcer patients\*
- Horizontally oriented, nylon covered air sectors
- Open air system
- Non-powered Controlled Release™ technology
- Easy Access Airport allows for quick access to control unit for powered therapy
- Anatomically inspired pressure redistribution zones
- Accommodates patient weights up to 500 lbs
- Heavy duty bottom cover
- Firm perimeter
- Optional Premium Alternating Pressure Therapy Control Unit



*\*Based on data provided by manufacturer.*

## Hill-Rom®

### AccuMax Quantum™ Convertible System

**The Unique Comfort Engineered Topper** – The AccuMax Quantum™ Convertible system's hand-crafted topper consisting of multiple layers of poly-fiber and co-polymer, allows the patient to be fully immersed and provides an incredibly comfortable laying surface.

**Patented Heel Pillow™** – The exclusive EncompassTSS Heel Pillow, standard on all Quantum models, significantly reduces interface pressure in the sensitive heel area.

\*U.S. Patent 5,398,354

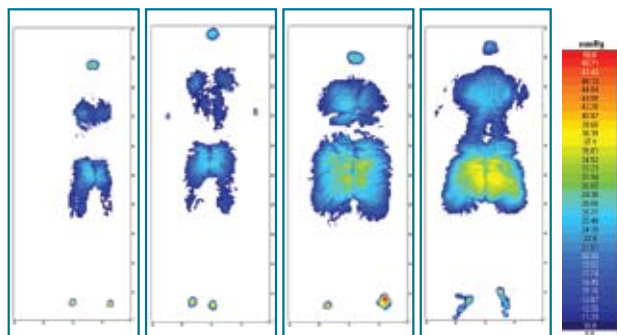
**The Anatomical Difference** – Provides six distinct pressure redistribution zones along its multiple air sectors.

**Heel Gradient Technology™** – Gentle heel gradient for lower interface pressure readings and enhanced heel protection.

#### Safe Skin™ Program AccuMax Quantum™ Convertible BUYERS ASSURANCE Program

Hill-Rom is pleased to offer a buyers assurance for AccuMax Quantum™ Convertible surfaces. Hill-Rom will stand behind these products for use with certain qualified patients for a period of two years from date of purchase. This assurance is available at no additional charge to customers who enter into the Buyers Assurance Agreement with Hill-Rom and satisfy the agreement's requirements. Ask your representative for additional information and program details.

#### AccuMax Quantum™ Convertible surface



Head of Bed 30° Head of Bed 30° Head of Bed 30° Head of Bed 30°  
117 lb female 170 lb male 288 lb female 324 lb male

Representative sample for supine patient at weight indicated. Pressure results will vary depending on patient weight and position. Always use in conjunction with facility protocols for patient repositioning and pressure ulcer prevention.

**A Choice of Top Covers** – The Quantum systems can be ordered with either the exclusive ElastiMax® 4-way stretch top cover or the Nylon Hypolex® Ultra top cover.

**Handles** – Two reinforced handles come standard.

#### Hill-Rom® AccuMax Quantum™ Convertible IS/TC/AD and flat deck surface specifications for the VersaCare®, TotalCare®, CareAssist® and flat deck beds

Topper .....	15 ILD and density 3.5 lbs VE
Body section zones (1-6) .....	Multi-layered with varying ILDs and densities ranging from 12 ILD to 42 ILD and densities from 1.65 to 1.85
Calf and heel zones (2 layers) .....	31 ILD with gentle slope, 1.85 density, 3.5 lbs VE
Firm support base .....	Density 1.9 PCF
Length .....	80", 84", 86"
Width .....	32", 35"
Height .....	7"
Weight .....	Approx. 29-34 lbs
Weight limit .....	500 lbs
Flammability .....	Cal 117, 121, 129, and 603, CPSC 16CFR1633, 16CFR16332
MVTR .....	6.75g/m²/hr

#### AccuMax Quantum Convertible Warranty

##### AccuMax Quantum Convertible Models

The warranty on these AccuMax Quantum models applies only to defects in structure, workmanship and materials and only to damages arising from normal hospital or facility usage for a period of five (5) years, (3) years non-prorated, from the date of purchase.

##### AccuMax Quantum Convertible TC, IS, Models

The warranty on these AccuMax Quantum models applies only to defects in structure, workmanship and materials and only to damages arising from normal hospital or facility usage.

**Air System:** Five (5) years, (3) years non-prorated, from the date of purchase.

**Top & Bottom Covers and Foam Containment System:** Two (2) years non-prorated, from the date of purchase. Damages arising from abnormal use such as those caused by needle punctures, burns, chemicals, negligent use or improper care or cleaning, are excluded from coverage. The manufacturer will pay shipping and handling charges incurred in connection with this warranty during the first year. Thereafter, those charges are the facility's sole responsibility.

The warranty for either of the two control units is one (1) year, parts and labor, under normal usage. Any damage resulting from dropping or other improper uses of the control unit will void the warranty.

Please see the EncompassTSS Owner's Manual for full warranty details.



A Hill-Rom/Encompass Joint Venture

To order mattress replacements, please  
contact EncompassTSS at 800-822-8288  
or [www.encompassstss.com](http://www.encompassstss.com).

ElastiMax® is a registered trademark of B.G. Industries.

Hypolex® is a registered trademark of Encompass Group, Inc.

Quantum and Controlled Release are trademarks of Encompass Group, Inc.

Hill-Rom reserves the right to make changes without notice in design, specifications and models. The only warranty Hill-Rom makes is the express written warranty extended on the sale or rental of its products.

© 2010 Hill-Rom Services, Inc. ALL RIGHTS RESERVED.

Hill-Rom®

Enhancing Outcomes for Patients and Their Caregivers.™