



Helping all people
live healthy lives

BD Saf-T-IntimaTM

Closed IV Catheter System

Designed to provide passive needle shielding
and a virtually bloodless venipuncture

BD Saf-T-Intima™

Closed IV Catheter System

**It's Covered. It's Closed.
It's the Complete Safety Catheter.**

BD Saf-T-Intima™ closed IV catheter system combines advanced needle-stick safety with an innovative closed catheter system design. The result is a virtually bloodless insertion and greater safety for you, all from the first and only integrated IV catheter system available for vascular access.

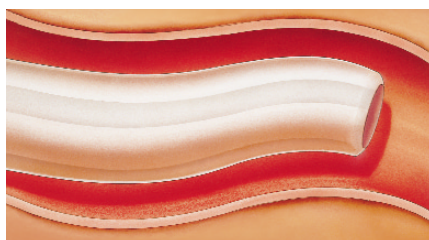
The patented shielding design incorporates a telescoping needle shield that passively covers the stylet as it is withdrawn from the catheter, safeguarding the clinician and others from potential sharps injury.

The pre-attached extension tubing offers a closed system, ensuring a virtually bloodless venipuncture. BD Saf-T-Intima closed IV catheter system lets you set an extra level of defense against exposure to blood-borne pathogens.

For added versatility, the removable PRN adapter allows the use of any needleless closed IV access device. The BD Saf-T-Intima closed IV catheter system with "Y" adapter allows for prepriming and flushing during venipuncture.

**Proven to optimize
patient outcomes.**

Multiple clinical investigations conducted over ten years have demonstrated that IV catheters made of BD Vialon™ biomaterial proved easier to insert, while providing longer indwelling times with improved patient outcomes.



*"...catheters made of Vialon were substantially less phlebitogenic than were catheters made of Teflon. The reduction in risk was nearly 30% overall, in severe phlebitis, the reduction was nearly 50%."**

BD Saf-T-Intima closed IV catheter system with passive needle shielding. One more choice of safety-engineered catheters from BD, designed with your safety in mind.

Ordering Information

BD Saf-T-Intima™ Closed IV Catheter System		
Catalog #	Gauge x Length	Color
383312	24 ga. x 0.75 in. (0.7 x 19 mm)	Yellow
383313	24 ga. x 0.75 in. (0.7 x 19 mm) with Y adapter	Yellow
383322	22 ga. x 0.75 in. (0.9 x 19 mm)	Blue
383323	22 ga. x 0.75 in. (0.9 x 19 mm) with Y adapter	Blue
383335	20 ga. x 1.00 in. (1.1 x 25 mm)	Pink
383336	20 ga. x 1.00 in. (1.1 x 25 mm) with Y adapter	Pink
383346	18 ga. x 1.00 in. (1.3 x 25 mm) with Y adapter	Green

Shipping case contains 200 catheters (8 boxes of 25)

* Dennis Maki, MD and Marilyn Ringer, BSN, MS. "Risk Factors for Infusion-related Phlebitis with Small Peripheral Venous Catheters" *Annals of Internal Medicine*, 1991; 114:845-854.

BD, BD Logo and all trademarks are the property of Becton, Dickinson and Company. ©2004 BD. D14441-2 E(9-04)



BD Medical
9450 South State Street
Sandy, Utah 84070
1-888-237-2762
www.bd.com/infusion

